

BASALTITE



BASALTITE GUIDOTTI BATTAGLINI

INDEX



MADE IN ITALY

G.B. Basaltite s.r.l.
BASALTITE GUIDOTTI BATTAGLINI
Office/Factory: Loc. Polinarda, snc
01023 BOLSENA (VT) ITALIA
Tel. +39.0761.798392/3 - Fax +39.0761.797135
e-mail: basaltite@basaltite.it - www.basaltite.it

STONE	1
QUARRY	2
FACTORY	6
STOCKYARD	8
DRAY LAY	10
FAIR EVENTS	11
PROJECTS GALLERY	12
FLOORING	14
INTERNAL CLADDING	22
EXTERNAL FACADE	26
EXTERNAL FLOORING	27
BATHROOM DESIGN	28
STAIRCASE	32
KITCHEN DESIGN	36
SWIMMING POOL	38
LANDSCAPE & GARDEN DESIGN	39
ARTISTIC REALIZATIONS	40
SURFACES	41

the STONE



TECHNICAL CHARACTERISTIC

Weight per Unit of Volume (kg/m3)	2559
Imbibition Coefficient (%)	0,87
Compression breaking load (kgf/cm2)	2219
Compression breaking load after freezing (kgf/cm2)	2179
Flexural breaking test (kgf/cm2)	205
Impact test (cm.)	45
Elasticity module (N/mm2)	51975
Thermal linear expansion coefficient °C-1	4,90X10-6

The test were carried out on the basis of UNI standards. Basaltite® is defined as a "leucotefrite" with the following characteristics: heavy, compact, hard with high values of compression breaking test, impact test. This stone is to be considered a frost resistant material.

University of Pisa
Department of
Structural Engineering
Certificate
N° 364/00



Basaltite® stone is a medium grey stone with some crystals of leucite immersed in a microcrystalline structure, originated from the hardening of lava in the eruption center of Bolsena-Bagnoregio - Italy.

BASALTITE® DIMENSIONS AND FINISHING: The blocks are quarried from banks with diamond wire (particularly and extremely updated extraction's method for a quarry of Basalt) and the maximum slab dimension is 320 x 200 cm. GB Basaltite® Srl production includes everything from the random slab to the most elaborated cut to size.



the QUARRY

GB Basaltite® Srl is the only company exploiting the lavastone Basaltite from its own quarry at Bolsena, located in the heart of Central Italy - Latium region. The quarry's land belongs to the Battaglini Family for many generations.



SURROUNDINGS

Basaltite® stone is nowadays extracted from the quarry located at Poggio Apparita, beside the office and the factory, nearby the beautiful lake Bolsena. This is a hillside quarry, worked opencast, located at an altitude of 560 mt.

Access by a secondary road is hardly noticeable: important aspect in visual impact's terms.







the **F**ACTORY

Timely execution - Finde Details - Focus on quality





the STOCKYARD



We welcome architects, contractors and clients to our stockyard to choose from remarkable range of Basaltite® slabs.

In order to best service the clients, large Basaltite® slabs are always kept in the stockyard.





the **DRY** LAY



The best way to inspect tiles and represent your project according to the job site drawings.
Now available 1.000 m² Warehouse



FAIR EVENTS



Verona Marmomacc
Xiamen Stone Fair
Shanghai StoneTech
SwissBau Basel
Valencia Marmol
Project Qatar
AIA Los Angeles
Coverings Orlando USA
ExpoRevestir Sao Paulo
Stone Tech Noremberg
Bau Munchen
Marmotec Carrara
Saie Due Bologna
Kamien Stone Poznan
Expo Stone Moscow
Baku Build Azerbaijan



PROJECTS GALLERY

GB Basaltite® Srl is proud of being able to meet and exceed the standards of the world's most famous and exacting architects. Some of the most prestigious projects, where Basaltite® stone has been supplied, are:

METROPOLITAN MUSEUM OF ART - Roman and Greek Gallery - New York USA	Page	13
NEW WORLD FINANCIAL CENTER (Brookfield Place) - Pelli Clarke Pelli Architects - New York USA	Page	14
SQUARE 54 OFFICE BUILDING - Pelli Clarke Pelli Architects - Pennsylvania Ave. Washington DC, USA	Page	16
MBC BROADCASTING CO. - Heerim Architects & Planners - Seoul SOUTH KOREA	Page	15
SAMSUNG R&D CENTER - Samoo Architects & Engineers - Pangyo, Seoul SOUTH KOREA	Page	25
W HOTEL - Fabio Ongarato Design + Sun Hung Kai Properties - HONG KONG	Page	31
SILVER MOUNTAIN & RED CLIFF Senzoku Gakuen College of Music - K/O Design - Kawasaki Tokyo JAPAN	Page	19-34
AUDI HEAD OFFICE - RKW Architects - Ingolstadt GERMANY	Page	15-35
TECHNISCHE UNIVERSITÄT - GMP Architects - Hamburg GERMANY	Page	35
JW MARRIOTT GROSVENOR HOUSE HOTEL - Woods Bagot & Anouska Design - London UK	Page	28-36
REGENT'S PLACE OFFICE BLDG. - WILKINSONEYRE Architects - Regent's Park London UK	Page	26
CMA CGM Headquarter Tower - Zaha Hadid Architects - Marseille FRANCE	Page	21
KING ABDULLAH SPORTS CITY - Jeddah SAUDI ARABIA		
AMIRI DIWAN AL SHAEEED PARK - Taep + Multitude Agency - Kuwait City KUWAIT	Page	39
PORT BAKU TOWERS OFFICE BLDG. - Chapman Taylor Architects - Baku AZERBAIJAN	Page	20
ASR INSURANCE HEADQUARTER - TeamV Architects - Utrecht NETHERLANDS	Page	21-27
CITY LIGHTS - Dominique Perrault Architecture, BNP Paribas Real Estate - Boulogne Paris FRANCE		



METROPOLITAN MUSEUM OF ART - Roman and Greek Gallery - New York USA

FLOORING



NEW WORLD FINANCIAL CENTER (BOOKFILED PLACE) - Pelli Clarke Pelli Architects - New York USA



AUDI HEAD OFFICE
RKW Architects - Ingolstadt Germany



MBC HEAD OFFICE BLDG.
HEERIM Architects - Seoul Korea





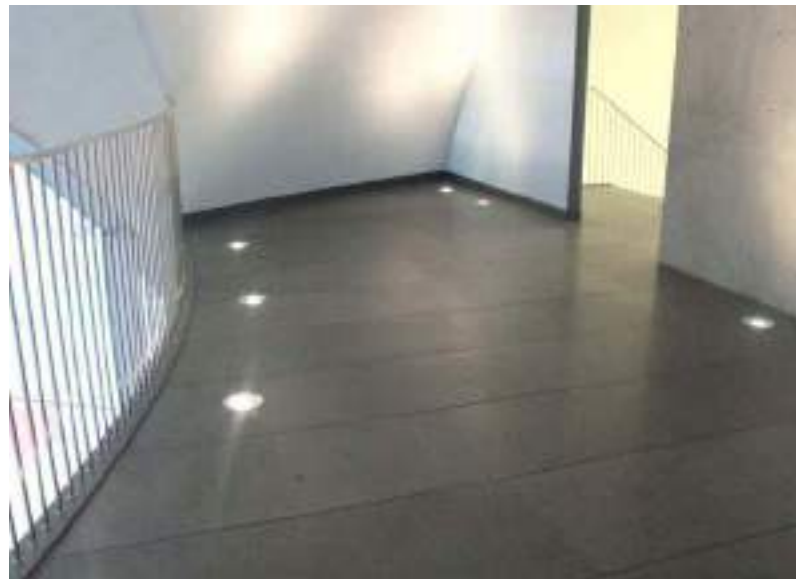
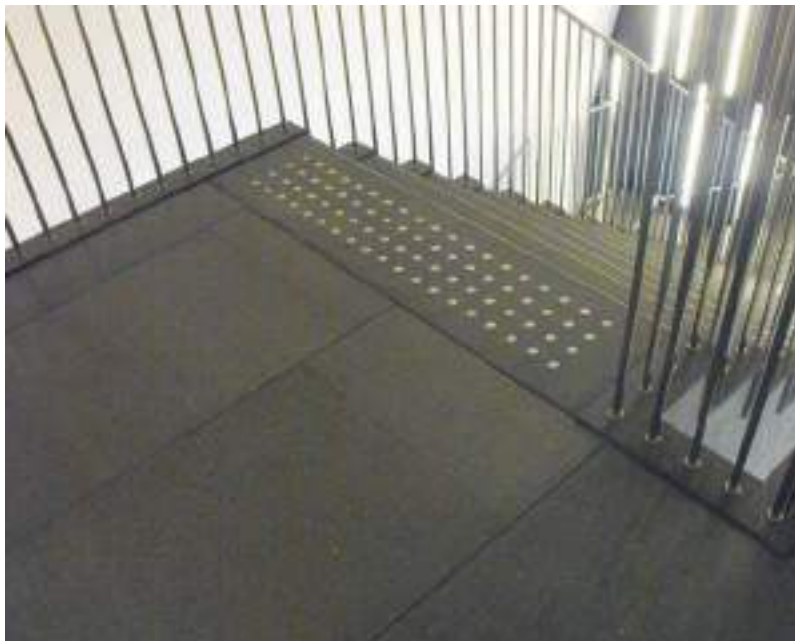
MECHALL



SQUARE 54 Pennsylvania Ave. - Pelli Architects - Washington DC USA



SILVER MOUNTAIN & RED CLIFF - Senzoku Gakuen College of Music - K/O Design - Kawasaki Tokyo JAPAN





PORT BAKU TOWERS Office Bldg. - Chapman Taylor Architects - Baku AZERBAIJAN

CMA CGM TOWER
ZAHA HADID & PARTNERS
Marseille France



ASR Insurance
Headquarter Utrecht
Netherlands - Studio TeamV
Amsterdam
Arch. Jeroen van Schooten

INTERNAL CLADDING

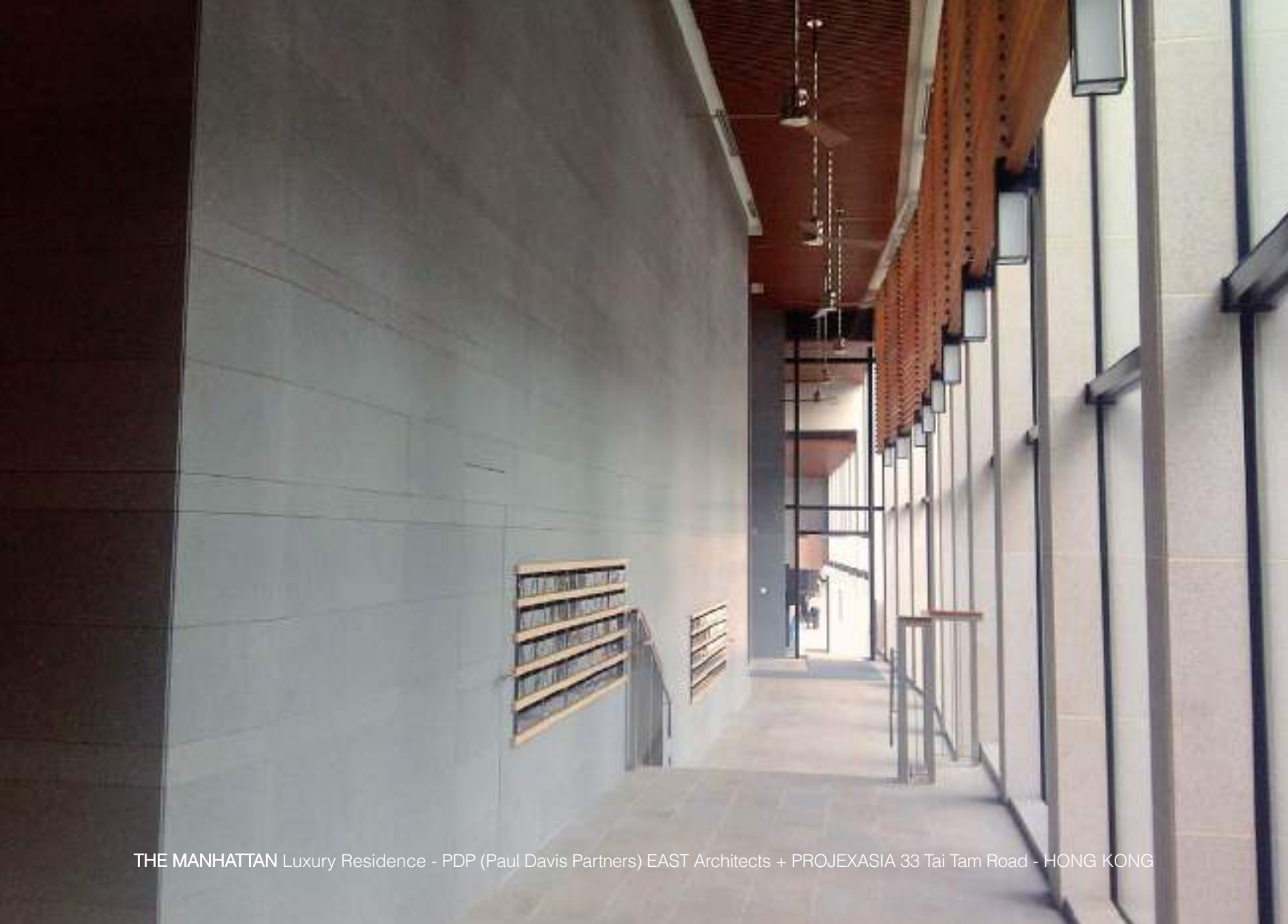


GIVENCHY Boutique
in IFC Shopping Mall
in HONG KONG
Central



THE MANHATTAN
Luxury Residence
PDP
(Paul Davis Partners)
EAST Architects +
PROJEXASIA
33 Tai Tam Road
HONG KONG





THE MANHATTAN Luxury Residence - PDP (Paul Davis Partners) EAST Architects + PROJEXASIA 33 Tai Tam Road - HONG KONG



ALLURE BOUTIQUE in Frankfurt / Main - Germany



SAMSUNG R&D CENTER - Samoo Architects & Engineers - Pangyo, SEOUL



EXTERNAL FACADE



REGENT'S PLACE OFFICE BLDG. - WILKINSONEYRE Architects - Regent's Park London UK

EXTERNAL FLOORING



ASR Insurance - Headquarter Utrecht Netherlands - Studio TeamV Amsterdam - Arch. Jeroen van Schooten



Optimal versatility, mechanical resistance to atmospheric agents and pounding: these are the characteristics, which predispose Basaltite® stone to be applied in a wide variety of external uses: from ventilated façade to flooring

BATHROOM DESIGN





JW MARRIOT GROSVENOR HOUSE HOTEL - WOODS BAGOT Architects & ANOUSKA Design - Park Lane London UK





CITY TOWER - Aarhus Denmark
ZURFACE - Nørre Snede



W HOTEL
Ongarato Design + Sun Hung Prop.
Kowloon HONG KONG



STAIRCASE



AUDI HEADQUARTER,
PROJEKT T23
RKW Architekten
Ingolstadt Germany



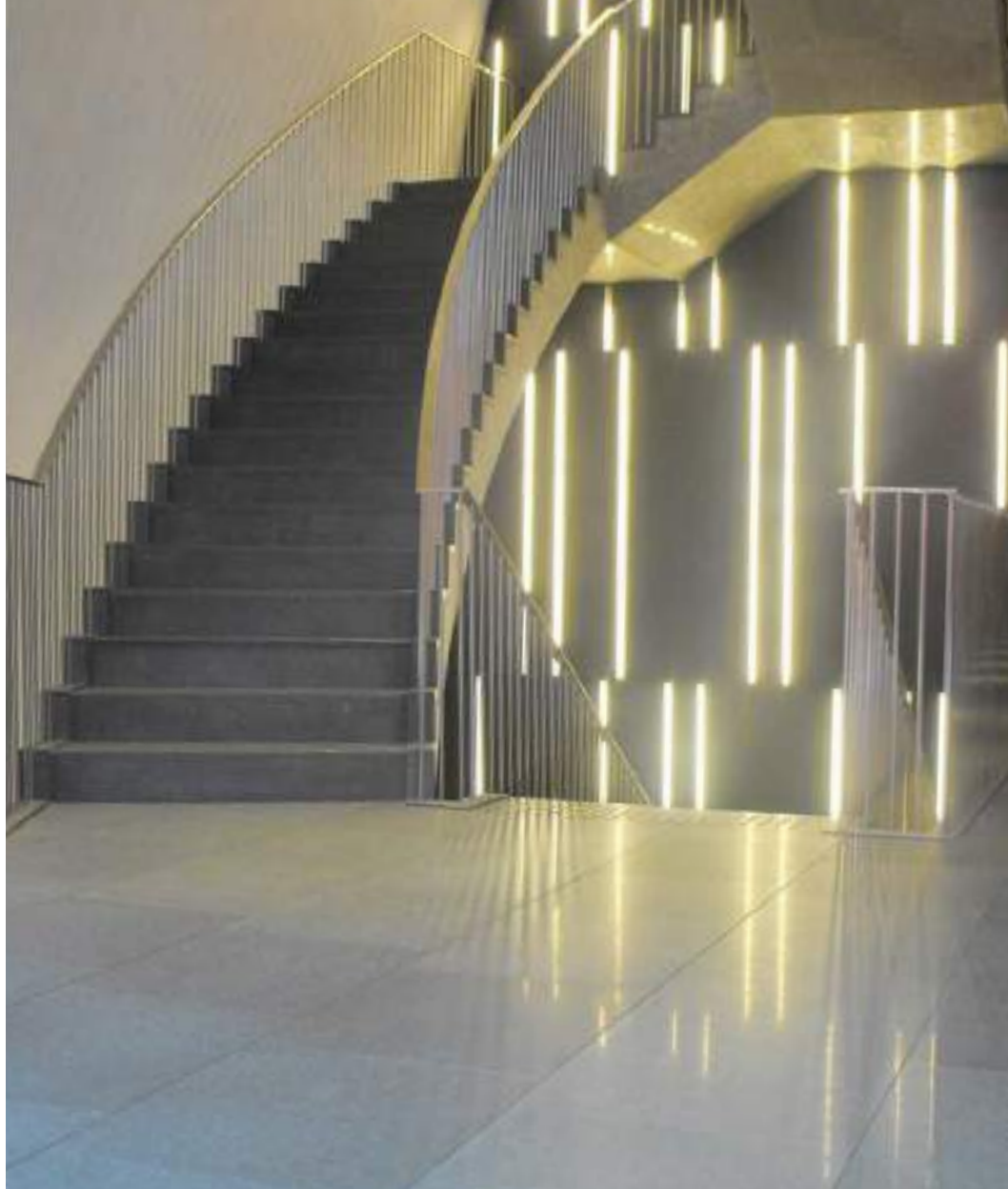
ALLIANZ INSURANCE
HEADQUARTER
Essen Germany







SILVER MOUNTAIN & RED CLIFF Senzoku Gakuen
College of Music K/O Design - Tokyo - Kawasaki JAPAN





TECHNISCHE UNIVERSITÄT GMP ARCHITEKTEN - Hamburg Harburg Germany



AUDI PROJEKT T23
RKW Architekten - Ingolstadt
Germany

KITCHEN DESIGN



JW MARRIOT GROSVENOR HOUSE HOTEL - WOODS BAGOT Architects & ANOUSKA Design - Park Lane London UK



STONE AGE LTD - London UK - Private Residence



SWIMMING POOL



VILLA K - Gohm Hiessberger Architects - Wien AUSTRIA

LANDSCAPE & GARDEN DESIGN

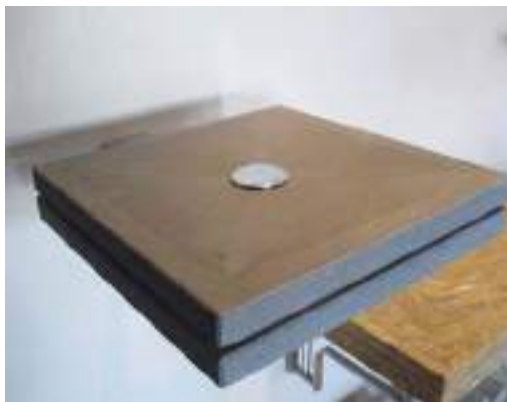


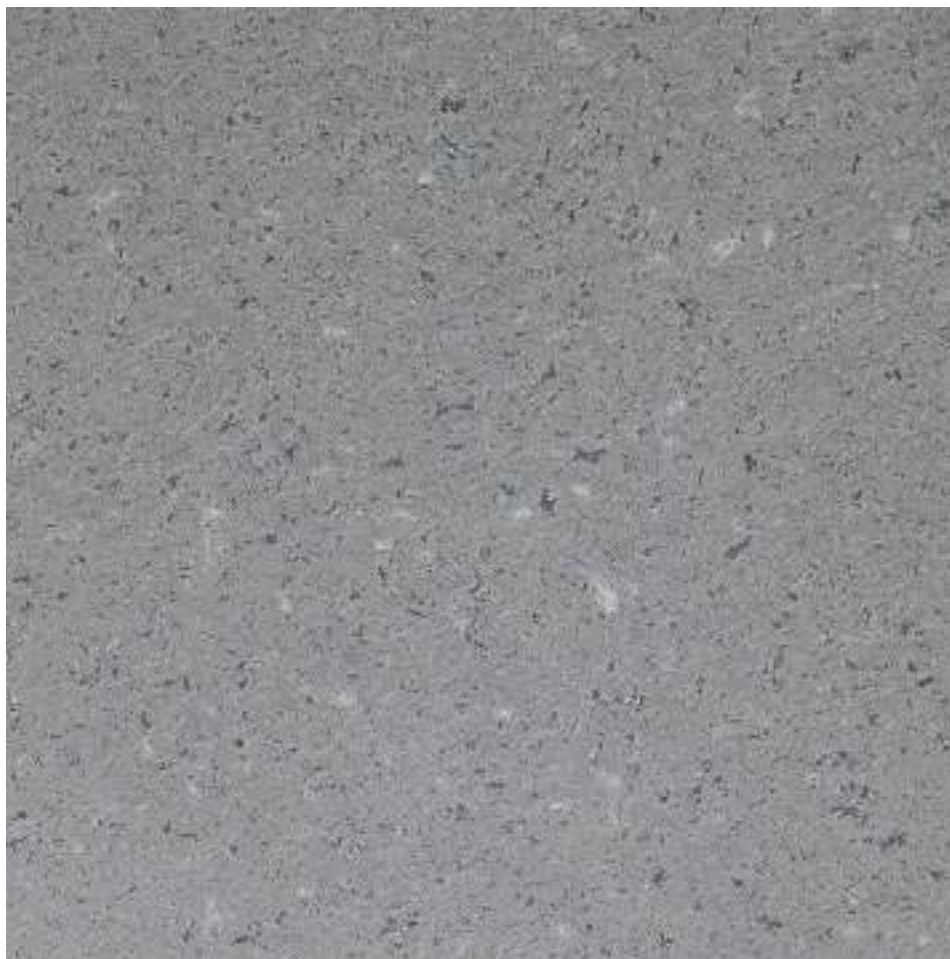
CHELSEA FLOWER & GARDEN SHOW - Marcus Barnett Design - London UK



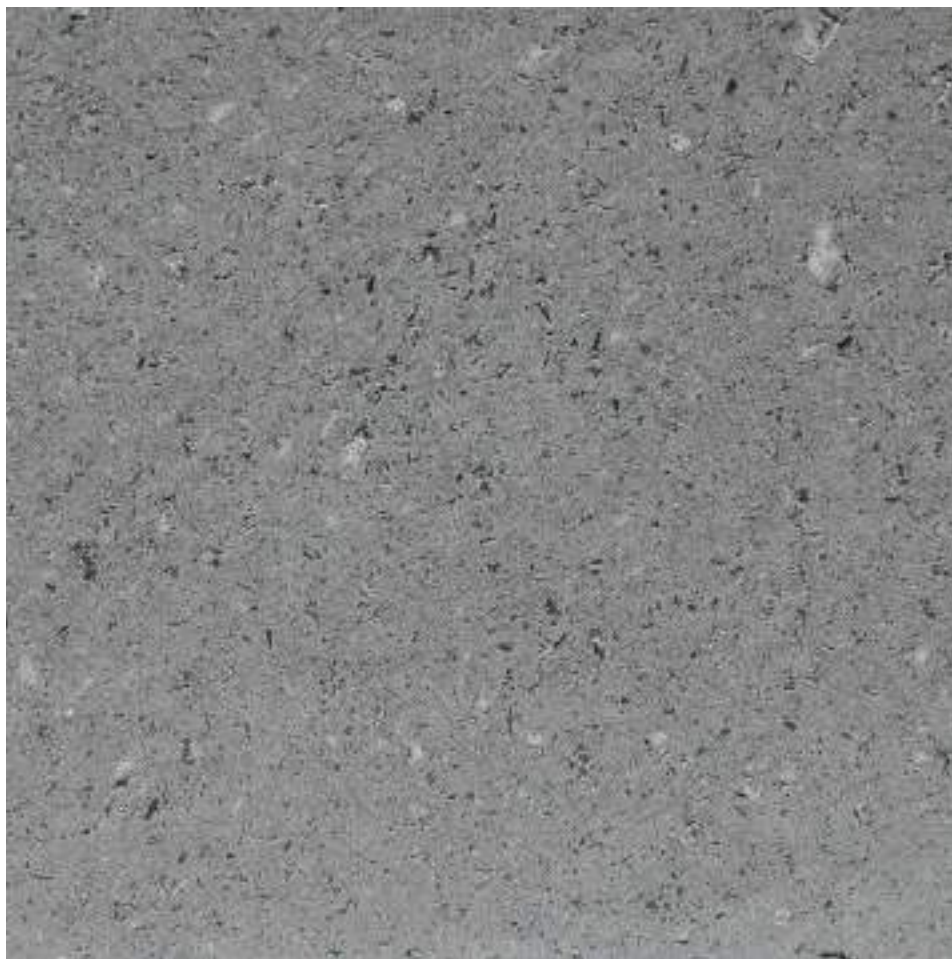
AMIRI DIWAN AL SHAEED PARK: Taep + Multitude Agency - Kuwait City KUWAIT

ARTISTIC REALIZATIONS

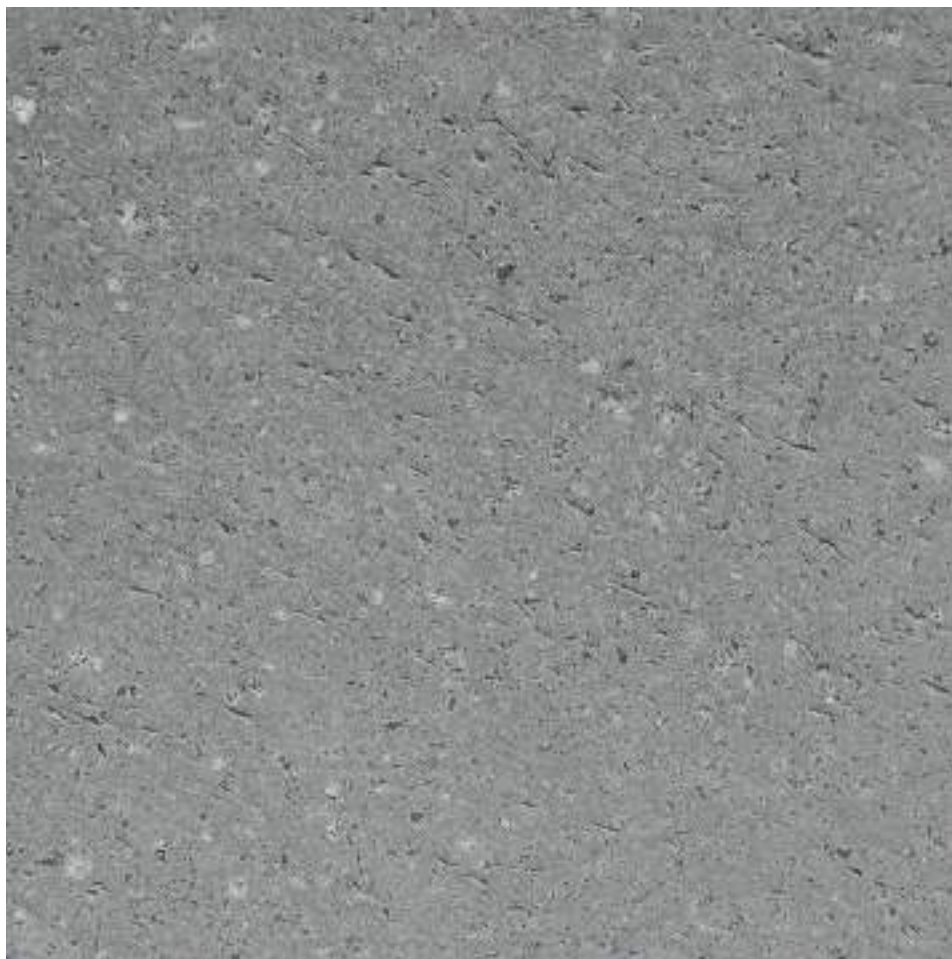




BASALTITE® HONED UNFILLED



BASALTITE® POLISHED UNFILLED



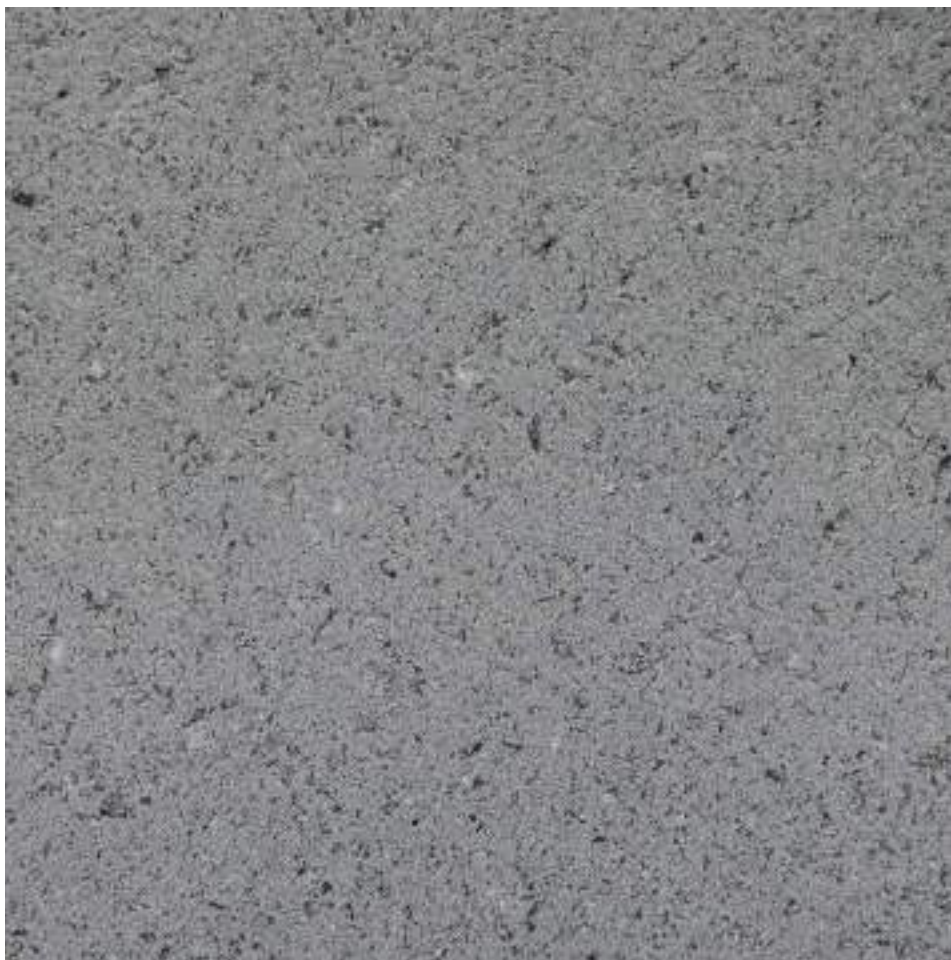
BASALTITE® BRUSHED



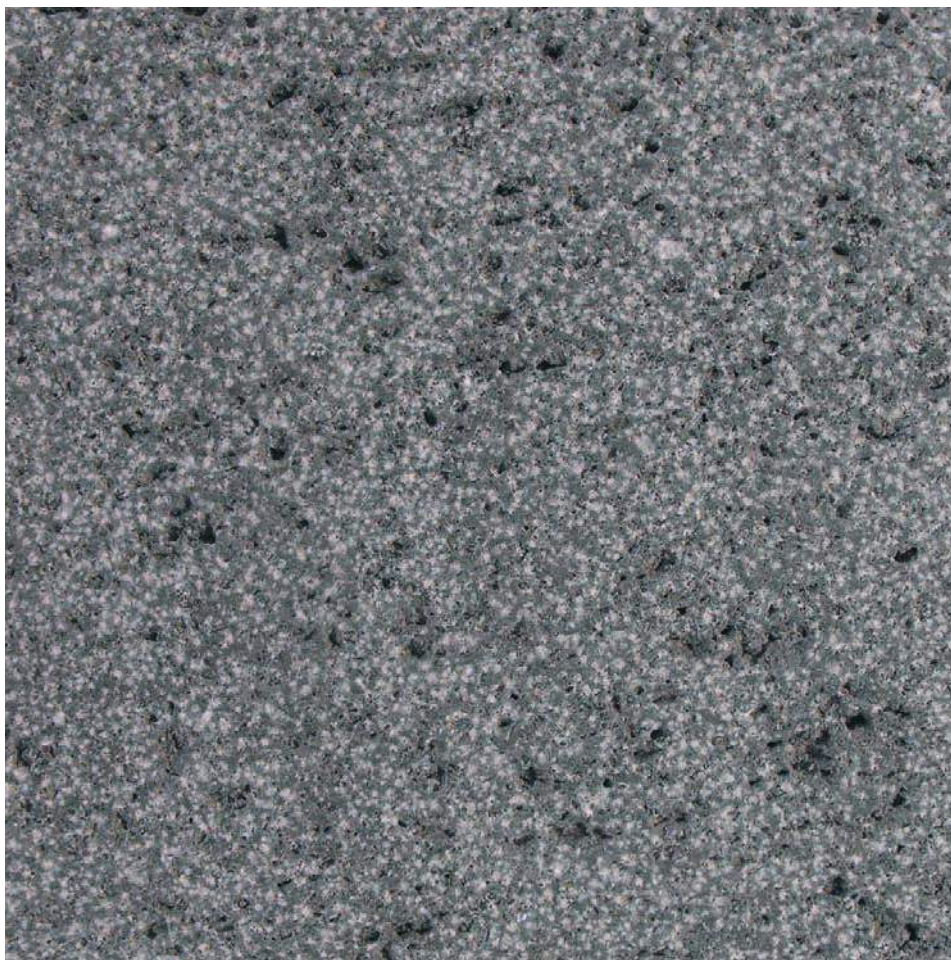
BASALTITE® SAWN - UNPOLISHED



BASALTITE® BUSHAMMERED



BASALTITE® SANDBLASTED



BASALTITE® BRUSHED & BUSHAMMERED





BASALTITE® DARK TONALITY

BASALTITE® is a stone certified:



G.B. Basaltite Srl is a company certified:
ISO 9001 - ISO 14001 - OHSAS 18001 - FITOK



N. IT05/0705



N. IT12/0541



N. IT12/0591



Cave Basalti Vulsinei Srl is a company certified:
OHSAS 18001 - ISO 14001



N. IT15/0598



N. IT06/0427



G.B. Basaltite s.r.l. BASALTITE GUIDOTTI BATTAGLINI · Corso Cavour n. 25 · 01023 BOLSENA (VT) ITALIA
Office/Factory: Loc. Polinarda, snc · 01023 BOLSENA (VT) ITALIA Tel. +39.0761.798392/3 · Fax +39.0761.797135 · e-mail: basaltite@basaltite.it · www.basaltite.it

