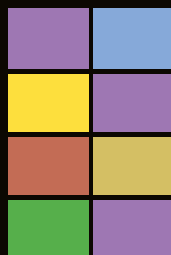




D O M O S D E S I G N P R O J E C T B O O K





INDEX



THE COMPANY | 4

OUR WORKSHOP AND YARD | 9

BESPOKE MANUFACTURING | 10

THE PROJECTS | 12

LONDON | 14

DOHA | 20

MONTEGROTTO | 30

LONDON | 34

ECHMIADZIN | 38

MAKASSAR | 44

SANTA CLARA, CA | 50

LONDON | 54

OTHER PROJECTS | 58



We are an affirmed Italian reality with a bright outlook to the future. Our history is deeply rooted in the art of manufacturing marble, along with Marmobon and Idealmarmi we can count on 50 years of experience and activity in the Valpatena/Verona areas, famous for their history

of extraction and manufacturing of natural stone. Domos represents a strategic evolution of our group of companies. Through Domos we aim to interact with architects and designers in an efficient and flexible manner.

Our department of technical experts will enable a full understanding of all the technical complexities of our client's projects which, as a consequence, enables us to propose innovative solutions using marble, stone and granites from all over the world. Below a showreel of some of our most popular projects.



DOMOS DESIGN PROJECT BOOK



In our showroom we can present to our clients Italian marbles and stone products deriving from all over the world. In our spacious meeting rooms we can discuss all the available finishes and manufacturing processes making each project individual.

We love to fully interact with our clients and make our expertise available for a professional and attentive customer experience.





DOMOS DESIGN PROJECT BOOK



OUR WORKSHOP AND YARD

In our yard we have available many blocks and slabs of a variety of high quality stones and marbles.

From the blocks we are able to cut to size and apply the different finishes requested from our clientele, making each project unique.



BESPOKE MANUFACTURING

In our opinion truly bespoke services must be able to offer expert services other than the more straight forward manufacturing of floor and wall tiles. Coordinated details such as boiserie, inlays, cut to size, columns details and mosaics are our passion and part of our expertise.

Our workshops have the latest technology and the best creative artisans needed to make your ideas and wishes into a beautiful reality.



1



2



3



4



DOMOS DESIGN PROJECT BOOK

1 waterjet cut
2 CNC manufacturing

3 inlay
4 carved manufacturing

UNITED KINGDOM

QATAR

ITALY

UNITED KINGDOM

ARMENIA

INDONESIA

U.S.A

UNITED KINGDOM

Haute couture of marble: an Italian specialty recognised worldwide

In only a few years Domos Design has become a reliable partner to many architects, designers and project managers all over the world.

Domos goes the extra mile in analysing carefully each project trying to make your requests into a reality. At the initial stages of each project we like to suggest materials and finishes which would closely match your visions always respecting your budgets and final decisions.

The selection and manufacturing of the marbles is where we truly shine, we like to think of ourselves as tailors working on a bespoke suit, a lot of attention to detail and care is required for a building site to become a finished architectural wonder.

We take on each project with care and passion, our showcase of projects below will illustrate some of our most popular realisations.

DOMOS DESIGN PROJECT BOOK



LONDON

The bespoke cut to size floor creating an optical illusion.

The project was commissioned in 2014 in collaboration with Deferranti and designed by David Collins Studio. Shoes Heaven, on the 5th floor of the Harrods luxury department store, is 42,000 square feet of designer shoes surrounded by luxury walls and floors finishes.

The radial flooring was manufactured through a cut to size technique, creating an optical illusion which emphasizes the luxury feel of the place. To realise this floor a variety of marbles such as Giallo Roare, Gris des Ardennes Doré and Moleanos were used.

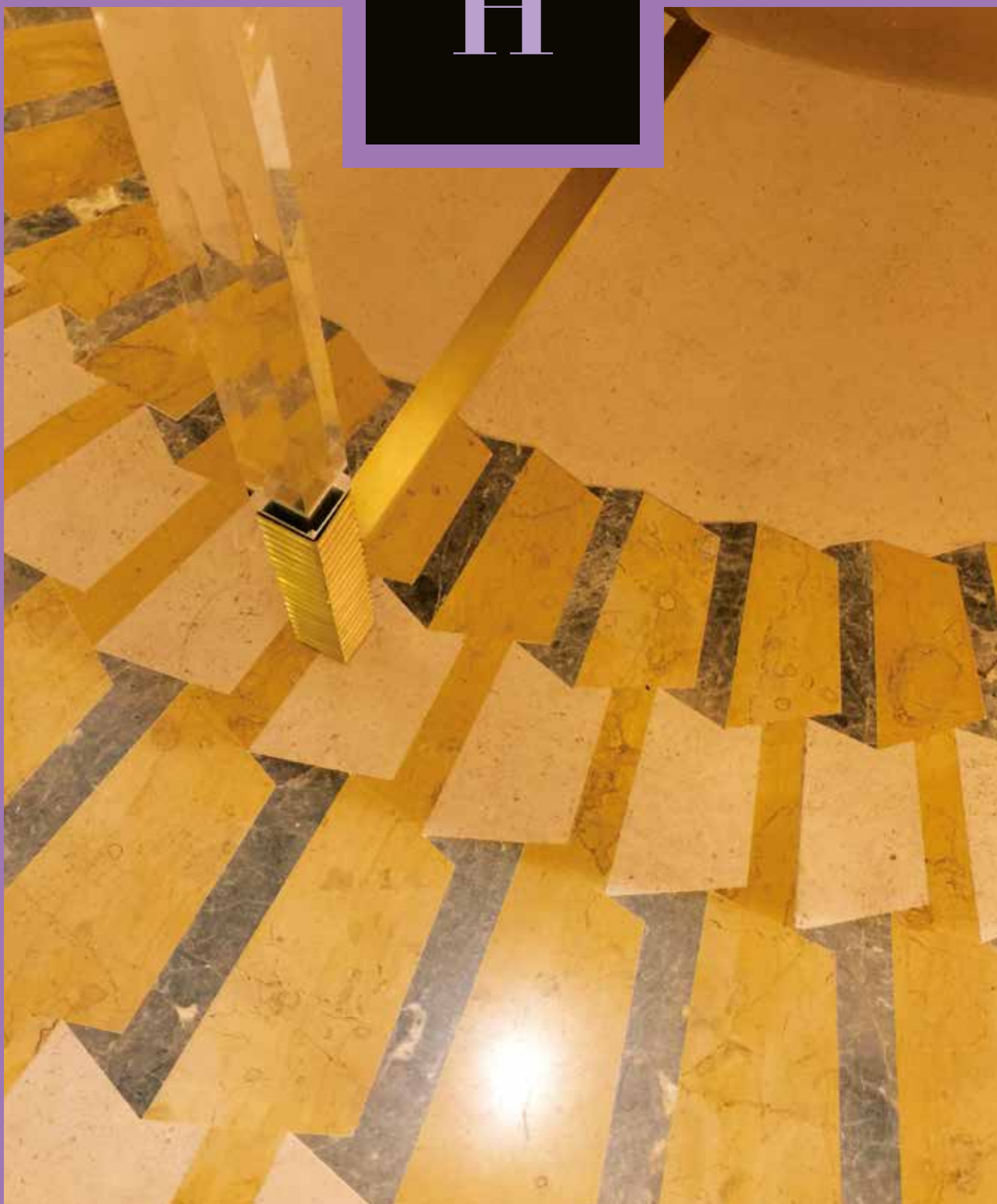
The ample corridors and walls along with the columns details are all in Travertino Silver and Nero Marquina. Always in Nero Marquina is the border that runs along all the corridors.



HARRODS

When marble meets luxury shopping

H

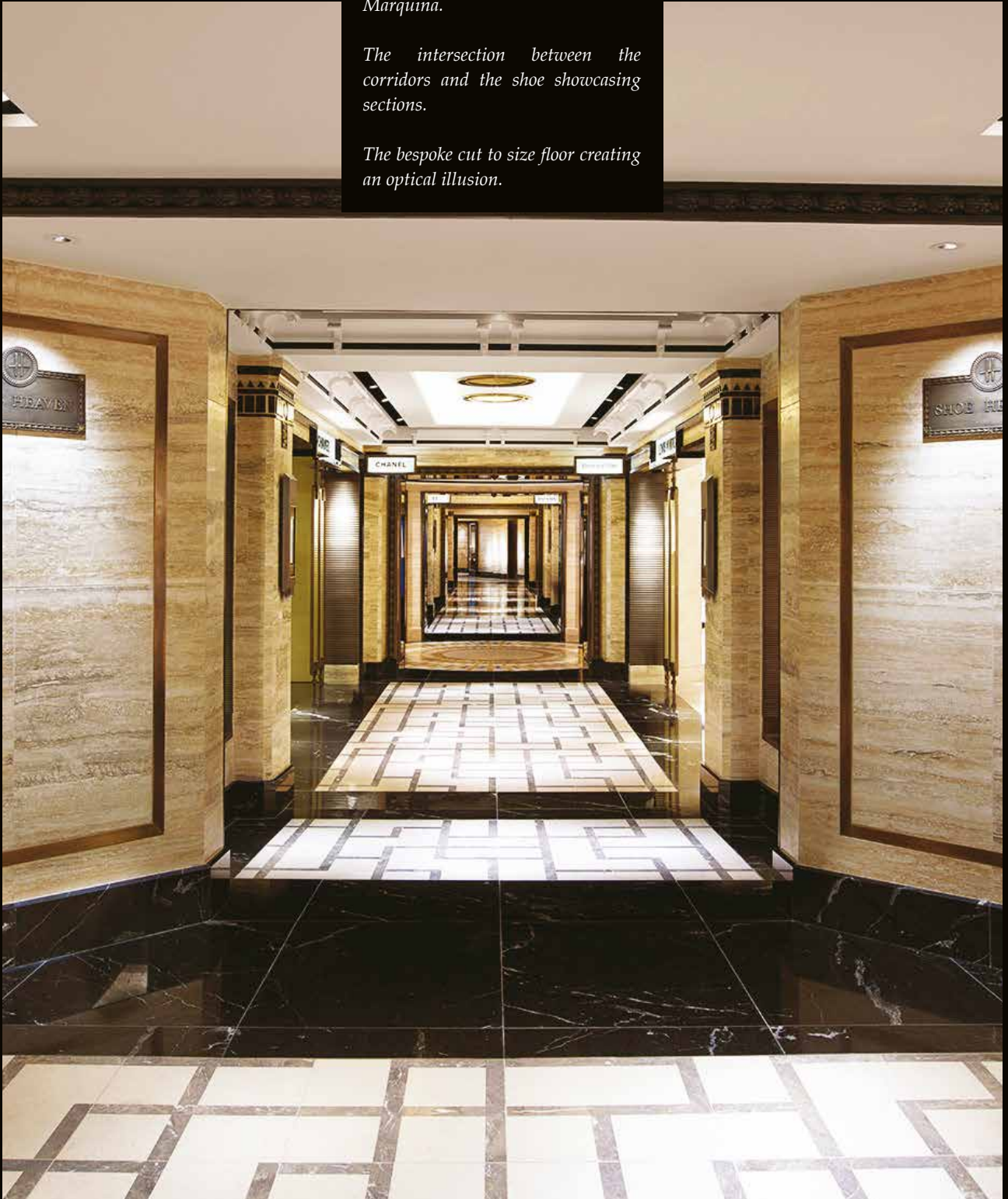


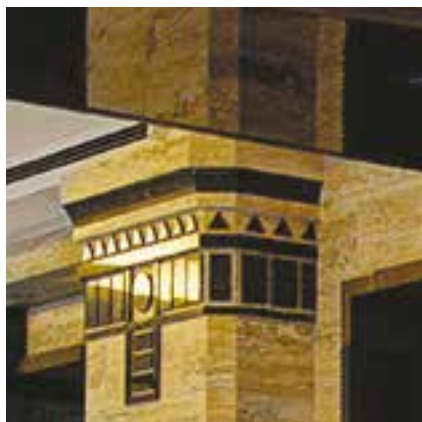
The ample corridors all cladded with our marbles.

To the left the details of the columns tops in Travertino Silver and Nero Marquina.

The intersection between the corridors and the shoe showcasing sections.

The bespoke cut to size floor creating an optical illusion.





*Harvey Nichols in collaboration with
Peter Trainor Stone.*

*Beauty Center Reception: Floor
in Bianco Carrara C, Cipollino
Ondulato and Versilis Grey.*

*Wall Paper Bar: Floors in composite
resin Rasotica, Verde Alpi, Rosso
Levanto e Rosso Verona.*





*Barber Shop: composite resin flooring
Imperial Black.*



QATAR

Main Magylis: floor in Emperador Dark and Light, Nero Marquina, Rosso Francia and Azul Macaubas.



large residential complex built in 2012 in Al Kheesa under the direction of Prisma International LCC, an architectural practice founded by Italian Architects living in Doha.

The project entailed 10 residential villas along with an event salon situated at the entrance of the complex and a health SPA club for the residents.

Domos Design supplied 18.000 m2 of marbles, granites, onyxes all finished in a variety of different finishes commissioned to make each area unique.

Many of our bespoke techniques were used in this project, Domos was able to take care of elements such as stairs, cut to size floors, inlays and hand finished all the manufacturing.



DOHA

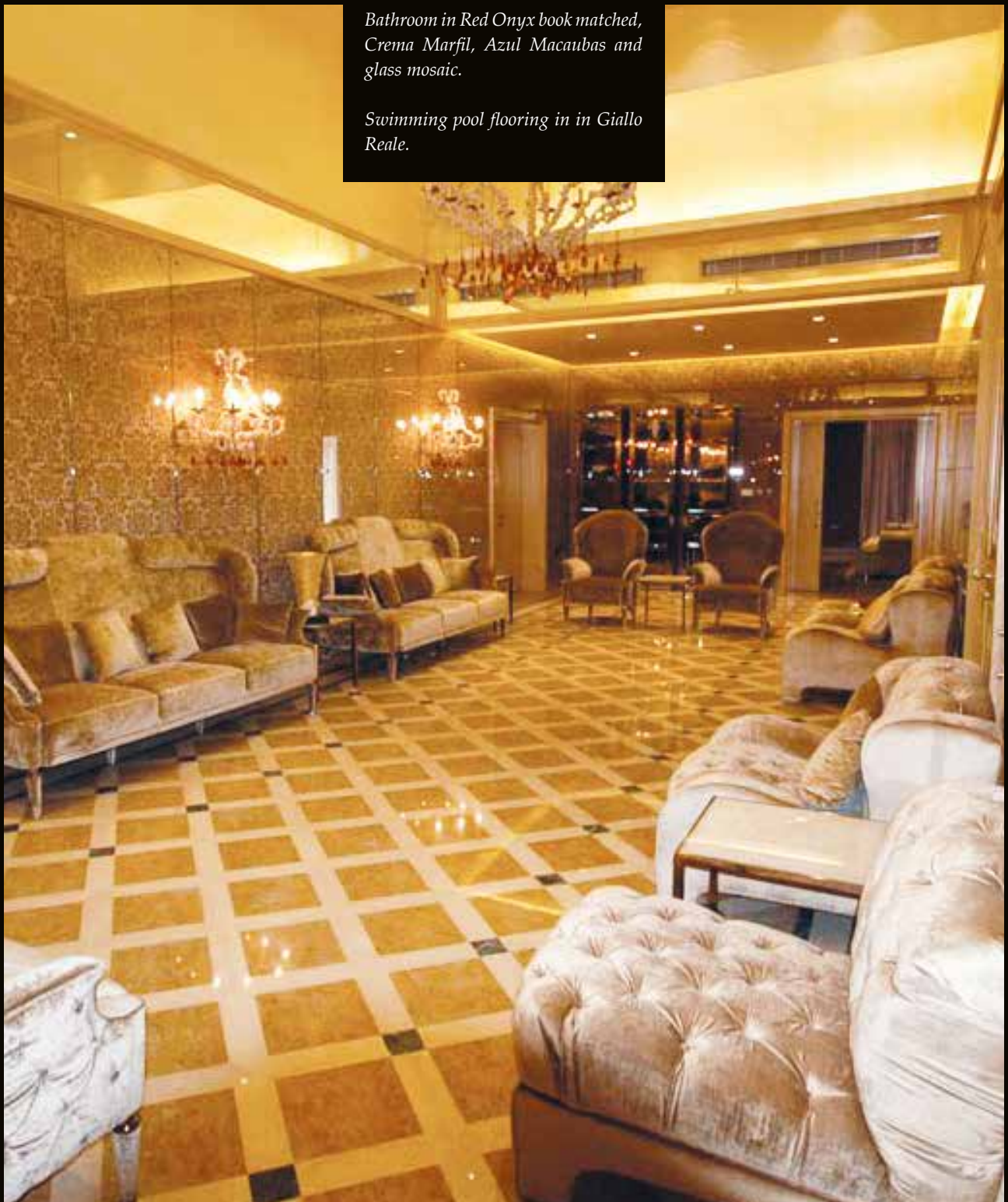
Arabian nights and marble



Ladies Magylis. Living Room and Dining in Giallo Reale, Botticino e Verde Alpi.

Bathroom in Red Onyx book matched, Crema Marfil, Azul Macaubas and glass mosaic.

Swimming pool flooring in in Giallo Reale.







Residence: bedroom floor in Crema Marfil and Emperador Brown.

Bathroom in Crema Marfil and Verde Guatemala.

Hallway: Flooring in Bianco Lasa, Rosso Levanto and Fior di Pesco.

Corridor: Floor in Crema Marfil, Giallo Roare, and Verde Guatemala.



Residence: hallway floor in Botticino Classico and Bianco Lasa.

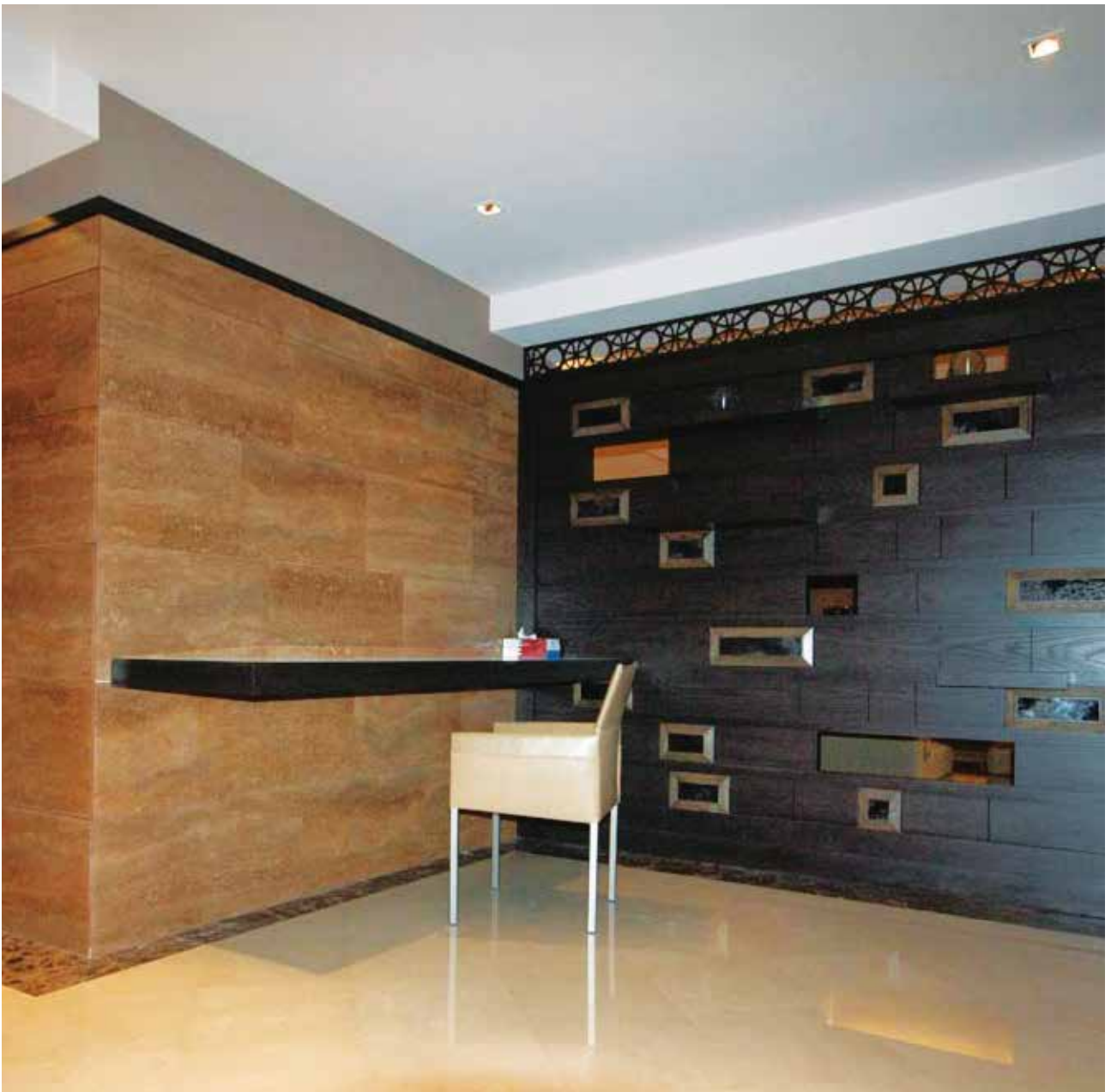
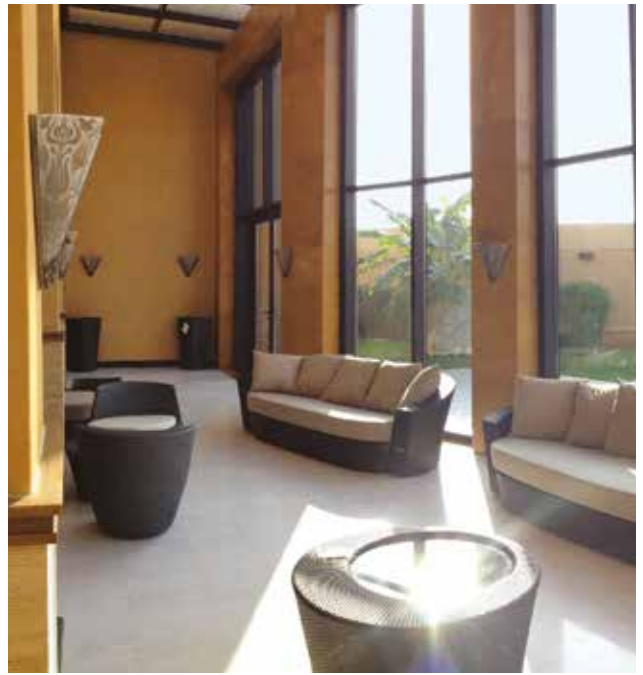
Bathroom: floors and walls in Botticino Classico, vanity in Nero Marquina.

Bathroom: walls in Botticino Classico with inlaid Oriental Gray.

Living Room: Flooring with inlaid pilasters in Bianco Namibia, Emperador Brown and Nero Marquina.





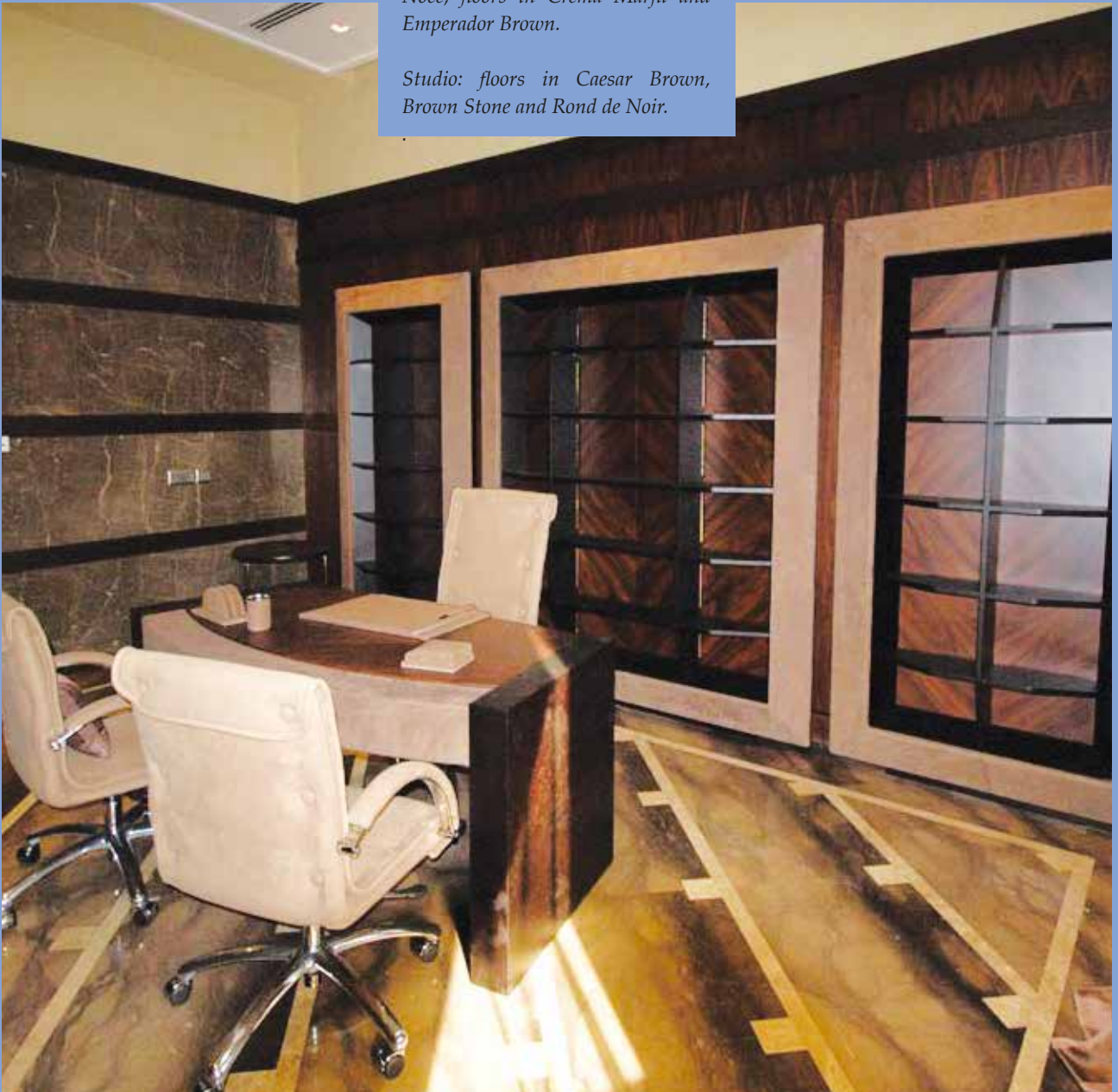


*Residence: Hallway in Crema Marfil
ed Emperador Brown.*

*Veranda in Pietra Bianca della
Lessinia in a brushed finish.*

*Bar Area: Walls in Travertino
Noce, floors in Crema Marfil and
Emperador Brown.*

*Studio: floors in Caesar Brown,
Brown Stone and Rond de Noir.*



MONTEGROTTO

Swimming pool flooring in Trani Bronzetto with a flamed anti slip finish, 50X50 format.

This Liberty style hotel from the beginning of the XX century, was one of the first hotels built in Montegrotto and it is situated at the heart of one of the largest source of thermal water in Europe.

Throughout the years the hotel has undergone many restorations. The latest was completed in 2014 which saw the addition of a new health spa wing to the main building.

The new SPA has two large swimming pools which are connected to each other. The project was developed by the architect Alberto Fiorenzato whom unified the lightness of the building with steel/glass structures and added a final touch of light with floor tiles in Trani Bronzetto supplied by Domos Design, in a variety of finishes and in a 50 x 50 format for the internal areas.

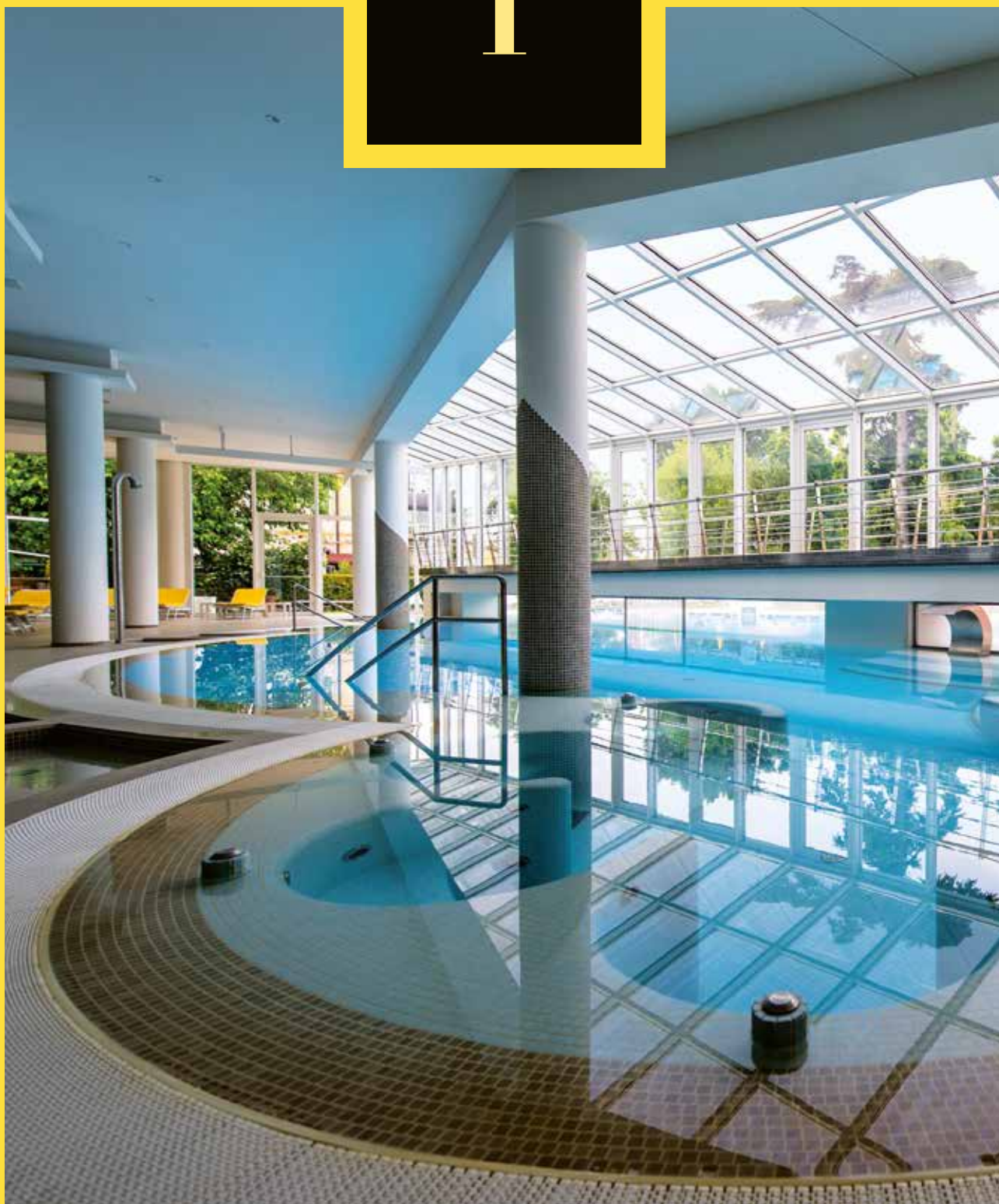
A cut to size floor that runs along the curved external swimming pool was also supplied by Domos.



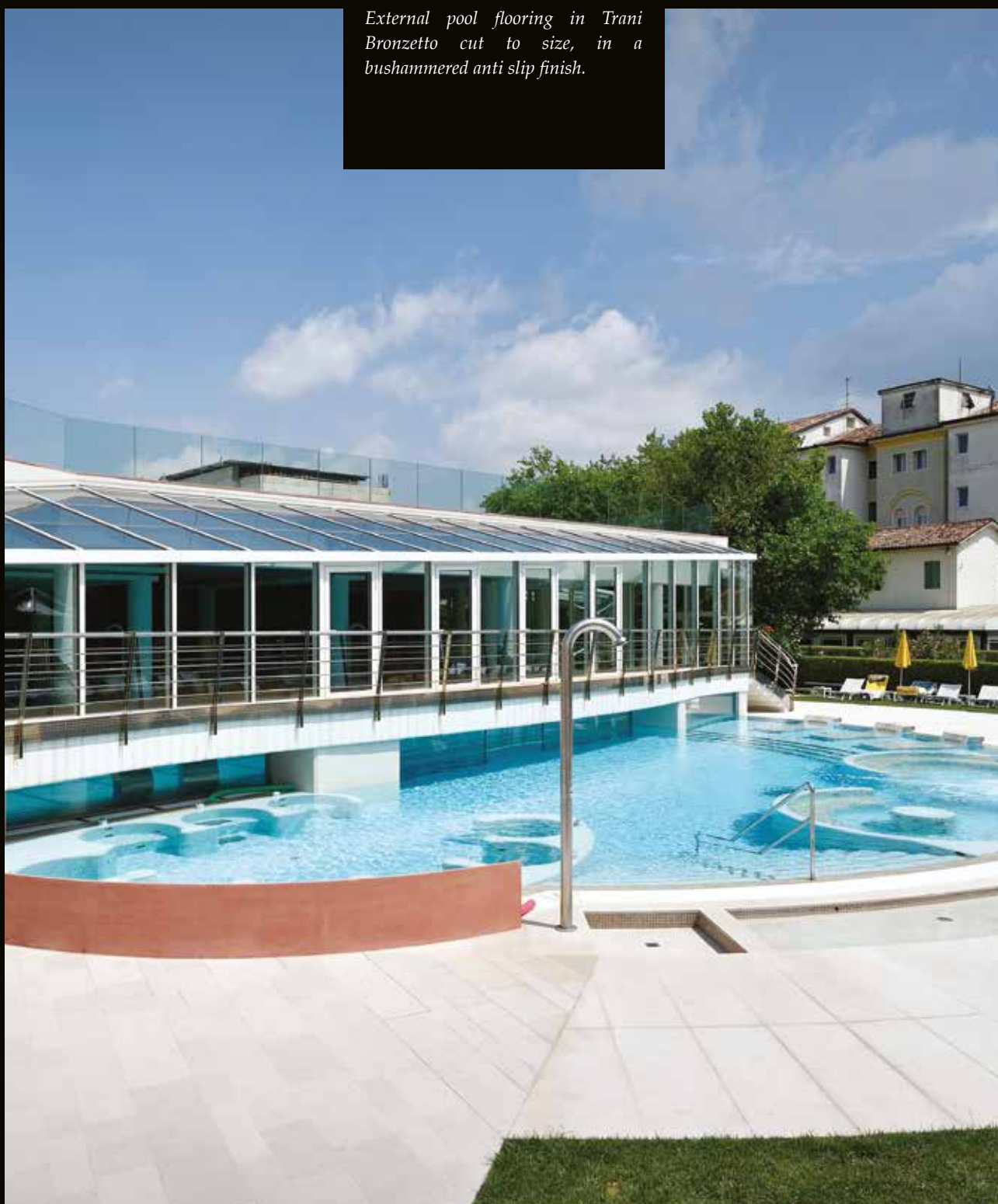
HOTEL TERME PREISTORICHE

Water and Stone: Nature's secrets

T



*External pool flooring in Trani
Bronzetto cut to size, in a
bushammered anti slip finish.*





LONDON

*Alchemi Group Offices: floor in Covelano
Black e Sahara Noir marbles.*



Alchemi group developments took on the restoration of a stunning Victorian building from the 1860s. Located in the heart of Bayswater and facing a beautiful private garden, Leinster Square apartments and townhouses are the perfect compromise between the timeless charm of Victorian England and the modern , luxurious comfort of central London.

The project was drawn up by TateHindle architects in close partnership with the English Heritage association creating 6 beautiful apartments and 5 hyper luxurious townhouses, which, from basement to top floors offer a movie star feel to everyday urban living. Included in the project was also the total restoration of the private gardens facing the building , which every resident can now access with their own key to the gates.

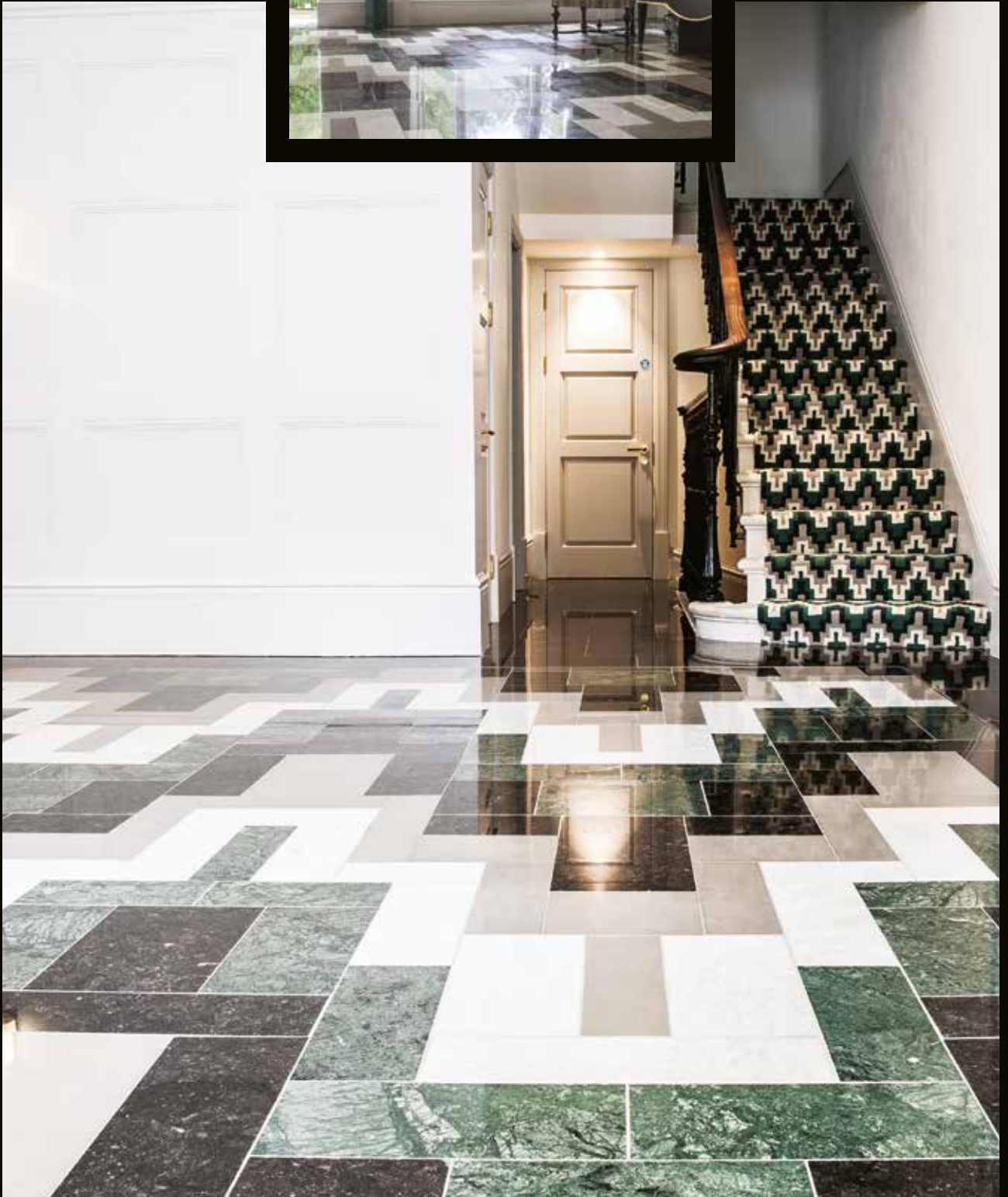
Domos Design was involved primarily in the supply of marble floors and walls for all the apartments and townhouses along with kitchen and bathroom details and the bespoke patterns for the lobby area on which we worked particularly close with Alchemi Group's design team. The marbles used are: Calacatta Oro, Azul Celeste, Palissandro Blu, Verde Ming, Bianco Carrara C, Nero Marquina e Quarzite Grigia.



LEINSTER SQUARE

Victorian Residences with modern comfort





Bespoke Pattern, Lobby area: Verde Guatemala, Verde Ming, Belgian Blue e Quarzite Grigia.

Bathroom: walls in Calacatta Oro, floors and vanity top in Nero Marquina.

Kitchen worktop in White Macaubas.



ECHMIADZIN

Stairs and arches of the triforium in Calacatta Oro, edge details in Honey Onix and banister in White Onyx.

Echmiadzin is a sacred city in Armenia, also known as “The city of the Holy Child” it can be found approximately 20 km away from the Armenian capital of Yerevan. Echmiadzin is also the base for the

Catholicos, the Armenian Apostolic Church. The city presents many churches and cathedrals beautifully accompanied by arches and generally stunning architecture, the most important building in the city is without any doubts the Patriarchal Palace - Nor Veharan. Built entirely in red stone it was finalized in 1962, today the palace hosts the Catholicos museum. The left wing of the palace is the official residence of the Patriarch whilst the right wing hosts the bishops of the church.

Currently this beautiful palace is undergoing an important restoration under direction of the famous architect Ashot Varosian, the restoration involves major part of the palace and has requested the usage of high end marble finishes and semiprecious materials.

Domos Design had the honour to provide premium quality Calacatta Oro for the walls and floors of the palace along with detailing such as banisters and columns in White and Honey Onyx.

The restoration is now almost fully completed with the exception of a few rooms.

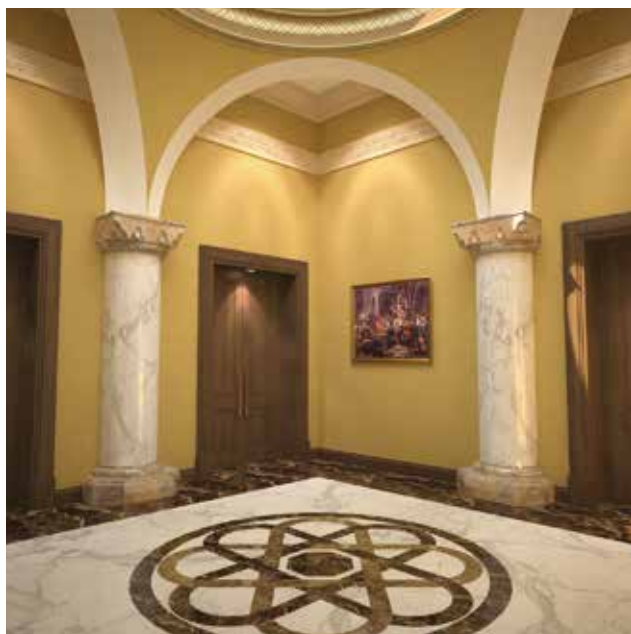


NOR VEHARAN

Patriarchal Palace of the Armenian Apostolic Church

N



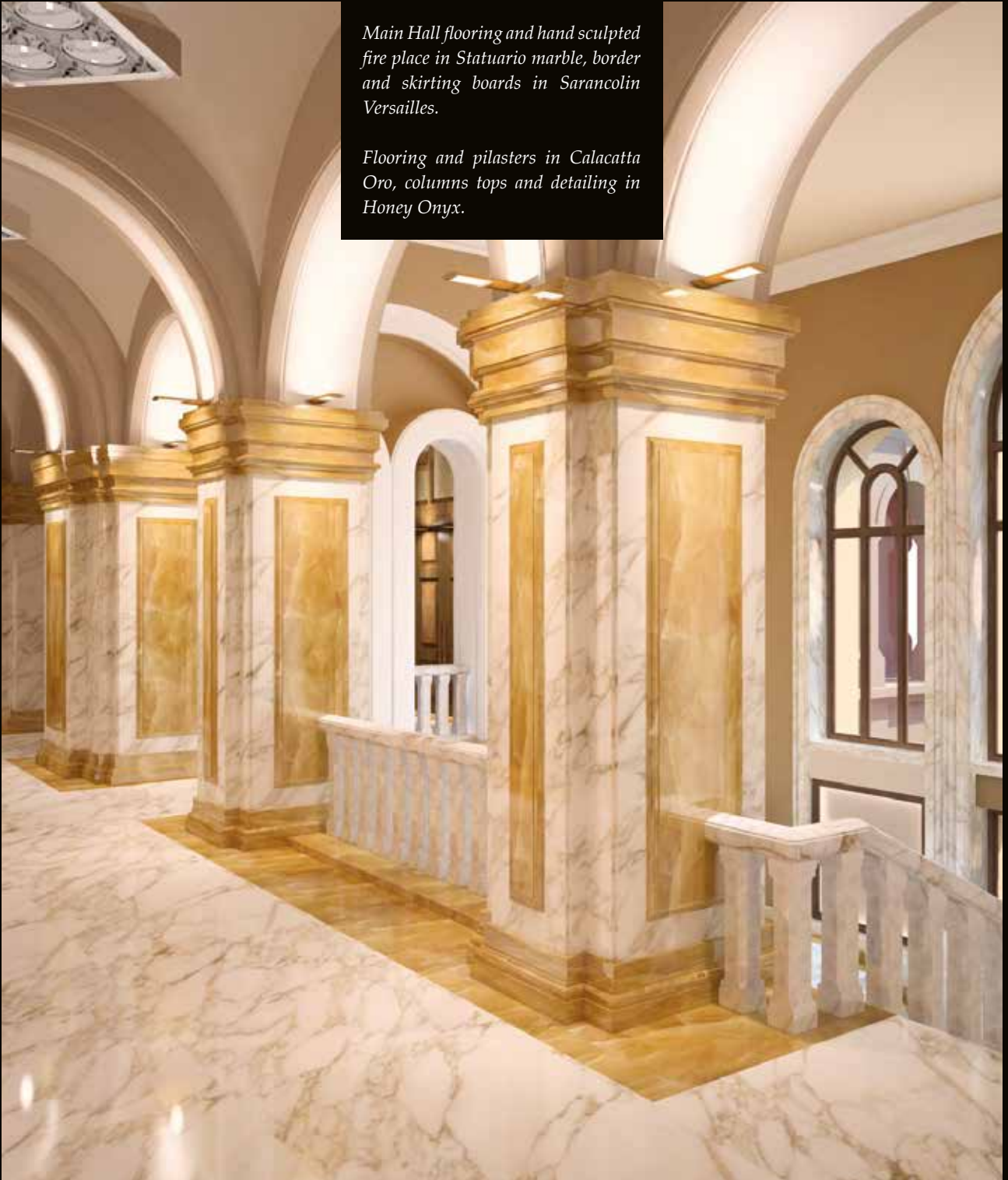


Bathroom in Calacatta Oro and Sodalite Supreme.

Atrium with columns in Calacatta Oro, base and top of the columns in Breccia Onyx. Calacatta flooring with decorative circular floor design (rosone) in Emperador Dark and Emperador Light marbles.

Main Hall flooring and hand sculpted fire place in Statuario marble, border and skirting boards in Sarancolin Versailles.

Flooring and pilasters in Calacatta Oro, columns tops and detailing in Honey Onyx.





*Floor in Bianco Carrara Statuario
with inlays Red France and Versilis
Gray.*

*Floor and hand sculpted fire place in
marble Carrara Acquabianca.*

*Project completion. Stairs, flooring
and pilasters in Calacatta Oro.
Columns top and details in Honey
Onyx.*



MAKASSAR

Novotel Makassar, lobby flooring and restaurant made from natural marble "Bianco Pioggia".

To complete our project reel, below you can see a showcase of luxury hotel flooring Domos Design has manufactured for our South East Indonesian branch Lorenz Marble.

Our main focus of work in Indonesia has been towards hospitality buildings, in particular luxury hotels. Here we not only have supplied marble flooring but also stone based composite resin floors. In the hotel's bathrooms, the supply of elements such as sinks and bath tubs varied from premium marbles to man made technical solutions in composite resins.

Below you can see the lobby area of the Makassar Novotel in Sulawesi island, a bathroom sample type of the Kutabex Beach Front Hotel in Bali, the floor and bathrooms in composite resin of the Double Six Seminyak Hotel also in Bali and finally the luxurious bathrooms in Calacatta of the Four Season Hotel in Jakarta.



NOVOTEL MAKASSAR

5 star tropical luxury hotels





*Kuta Beach Heritage Hotel, Lobby
and suites: Floor in Botticino and
Perlato composite resin marble.*

*Vanity top in composite resin
"Ceppo".*

*Hotel Double Six, Seminyak: lobby
and bathrooms in composite resin
"Bianco Zinco".*





Hotel Four Season, Jakarta.

Bathrooms: book-matched in Calacatta Silver; marble floors in Calacatta Silver with vanity tops in Calacatta Silver and Bardiglio marble.



SANTA CLARA, CA

"Sparkle Grey" honed floor.
"Pergamena" honed floor.

Located in the heart of Silicon Valley, Westfield Valley Fair is one of the most productive shopping centers in the United States,

showcasing a unique lineup of international luxury boutiques and iconic global brands.

With its enviable Silicon Valley location and the West Coast's most diverse and dynamic retail mix, Westfield Valley Fair is a place where prestigious luxury brands, digitally native start-up retailers, and best-in-class dining and entertainment all come together to create a true lifestyle destination and the perfect place to shop, dine and play.

Prior to the expansion, a full makeover of Valley Fair's existing indoor galleries was unveiled in Fall 2018, with a style aligned with the mid-century modern inspiration of the new development.

Domos, in partnership with A.S.T. , supplied approx 400k square-feet in triangles tiles for flooring and mosaic.



WESTFIELD VALLEY FAIR

V





Custom mosaic in light tumbled finish, made with more than 15 materials in two different patterns designed by Westfield.

Triangles 24" side in "Thala Royal", "Pergamena", "Foussana".





LONDON

Bathroom in "Covelano Black" vein-matched



Grade II listed Edwardian gem, thoughtfully reimagined as an exclusive collection of 17 beautiful boutique apartments and landmark restaurant.

Here, classical London architecture is juxtaposed with an exceptional contemporary new build.

Set in the heart of London's Victoria, SW1.

A private, calming courtyard by James Lee Design.

Interiors by Studio L, London.

Westminster Fire Station heralds a stylish new chapter in the metropolitan life of Victoria.



WESTMINSTER FIRE STATION

W





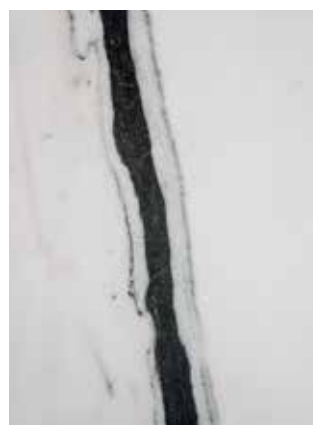
Bathroom floor in "Calacatta Viola" honed marble tiles.

Custom mosaic in "Bardiglio", "Carrara", "Versilis blue".

"Covelano black" vein-matched floor.

Quartzite Giotto" kitchen top





OTHER PROJECTS



Residence, hallway and stairs in Crema Marfil and Belgian Black.



Corridor in Calacatta Colorado.



Restaurant in Wien, floor in Giallo Reale.



Bathroom in Rosa Estremoz and Emperador Dark.



Bathroom in Arabescato Cervaiole.



Vanity top in marble Black & Gold.



Floor in Bianco Carrara C and table in marble Azul Celeste.



*Church S. Maria del Paradiso.
Floor in Botticino and Rosso Verona.*



*Floor in Versilis Blue, Grigio Torun
and Arctic White.
Swissbel Resort Pecatu, Uluwatu, Bali.*



Bathroom in Crema Marfil.



*Solid basin in marble
Bianco Lasa.*



*Vanity top
in Palissandro Classico.*



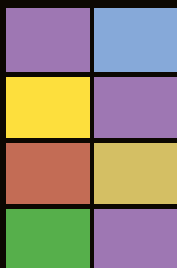
*Counter Tops in Honey Onyx.
Restaurant Kayu Putih
at St. Regis Hotel, Nusa Dua, Bali.*



*Floor in Giallo Reale and Emperador Dark Marble.
Seres Hotel and Resort, Ubud, Bali.*



*Counter Tops in Superwhite and Ksoul Quartz.
Renaissance Bali Resort & Spa, Uluwatu, Bali.*



DOMOS S.R.L.

VIA D. Da Lugo 19, 37023 Lugo Di Grezzana (VR) ITALY

TEL. +39 045 8801029 - fax. +39 045 8801644

domos@domosdesign.it - www.domosdesign.it

