

A MARBLE LAMP.

A MARBLE LAMP.

A project by Domos Design
Designed by Antonio Romanò

05 An Introduction

07 Elle

11 Loop

19 Black&White

25 Paolo&Francesca

29 Romeo&Giulietta

CONTENTS

A Marble Lamp tells a new tale. It's about our ancient traditions – as Domos Design, marble experts – and the endeavor to stay off the beaten path and be open to new ideas, so things become a promise, a vision for our future. The same vision that inspired the architect Antonio Romanò, designer of our collection.

Marble isn't just a mere object or support in A Marble Lamp; it takes back its noble qualities and draws elegant yet expressive strength from it, thus taking center stage in an exclusive light, shape and color show.

Elle materials, Romeo & Giulietta and Night & Day surfaces, Loop combinations and Paolo & Francesca nuances. Each element holds a promise for the future and demonstrates how new technologies combine perfectly with the craft of our old master artisans.

Discovering marble is our life.
Sculpting light is our ambition.

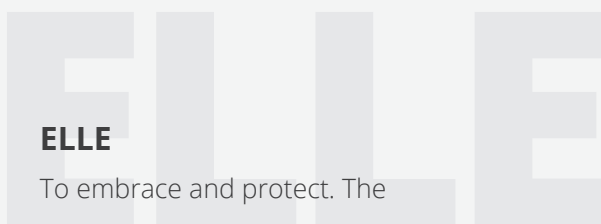


Daniele Dal Corso
Sales Manager

ANTONIO ROMANÒ

Architect and designer, founder of collectives Fuzzy Design and Mitili Design between 1998 and 2005, which he employs to draw and design furniture for Ipe-Cavalli, Tonelli, Swan Italia, Ferrari BK and MOS Italia, on display at many editions of the Salone Satellite and Salone del Mobile di Milano.

His work with Domos Design began in 2006: resulting in a new showroom and the introduction of a line of tables and marble items at the very first edition of the Made Expo in Milan. A Marble Lamp collection had its world premiere at the 2016 Marmomacc show in Verona.



ELLE

To embrace and protect. The shape of Elle is its own shell, an exoskeleton that keeps light safe.



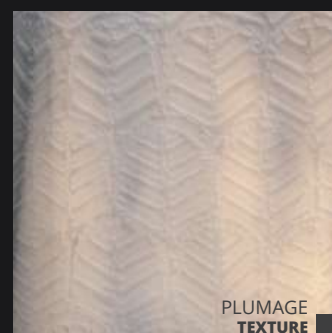




ELLE Applique

It's an applique lamp constructed from two materials, Bianco Lasa and Bianco Calacatta. The outer surface can be honed or rough.

Elle's light is a partition point indicating the passage between areas. It's ideal for specific environments such as hotel rooms or home columns.



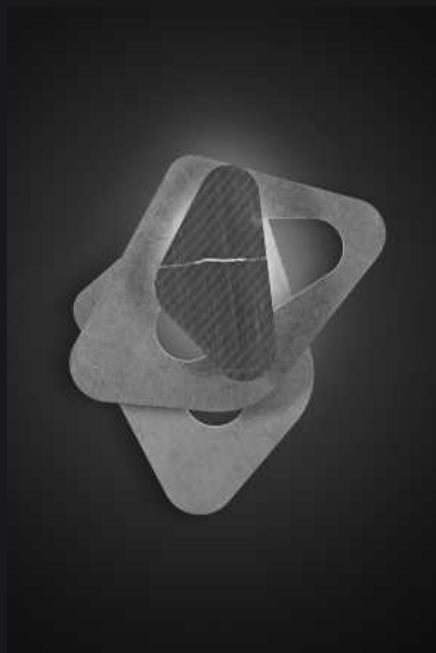
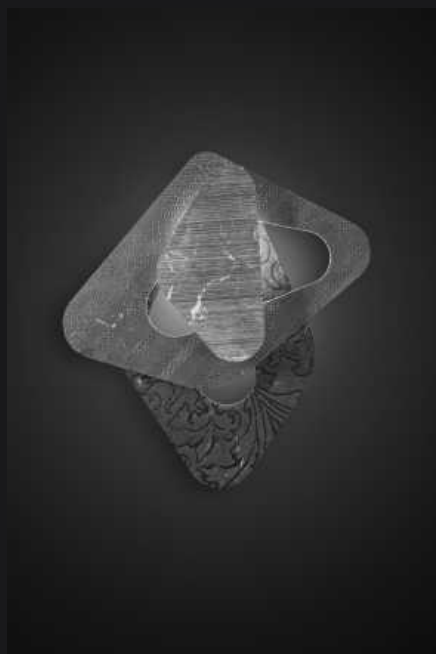
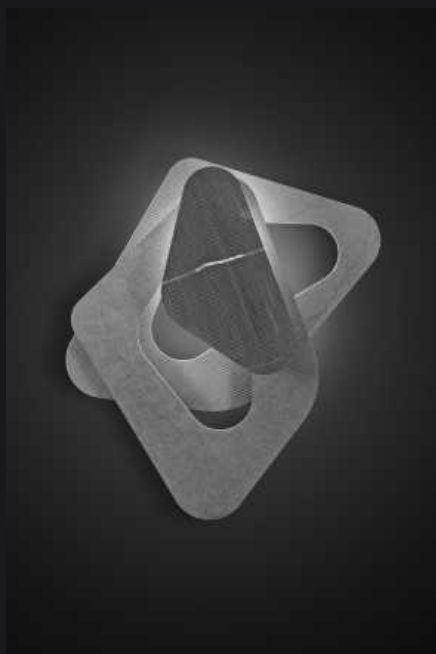
40 x 22 x 10 cm

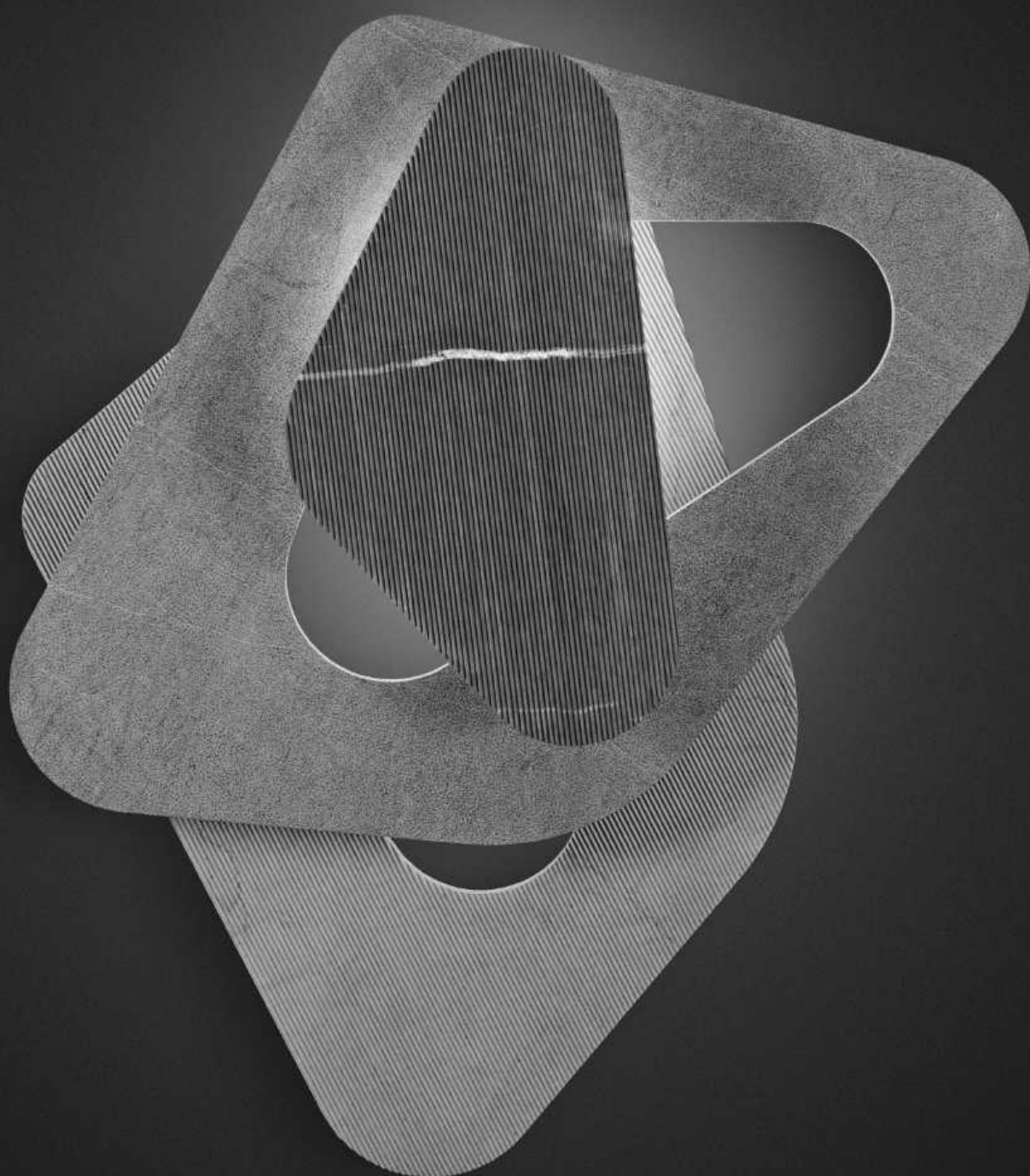
LOOP

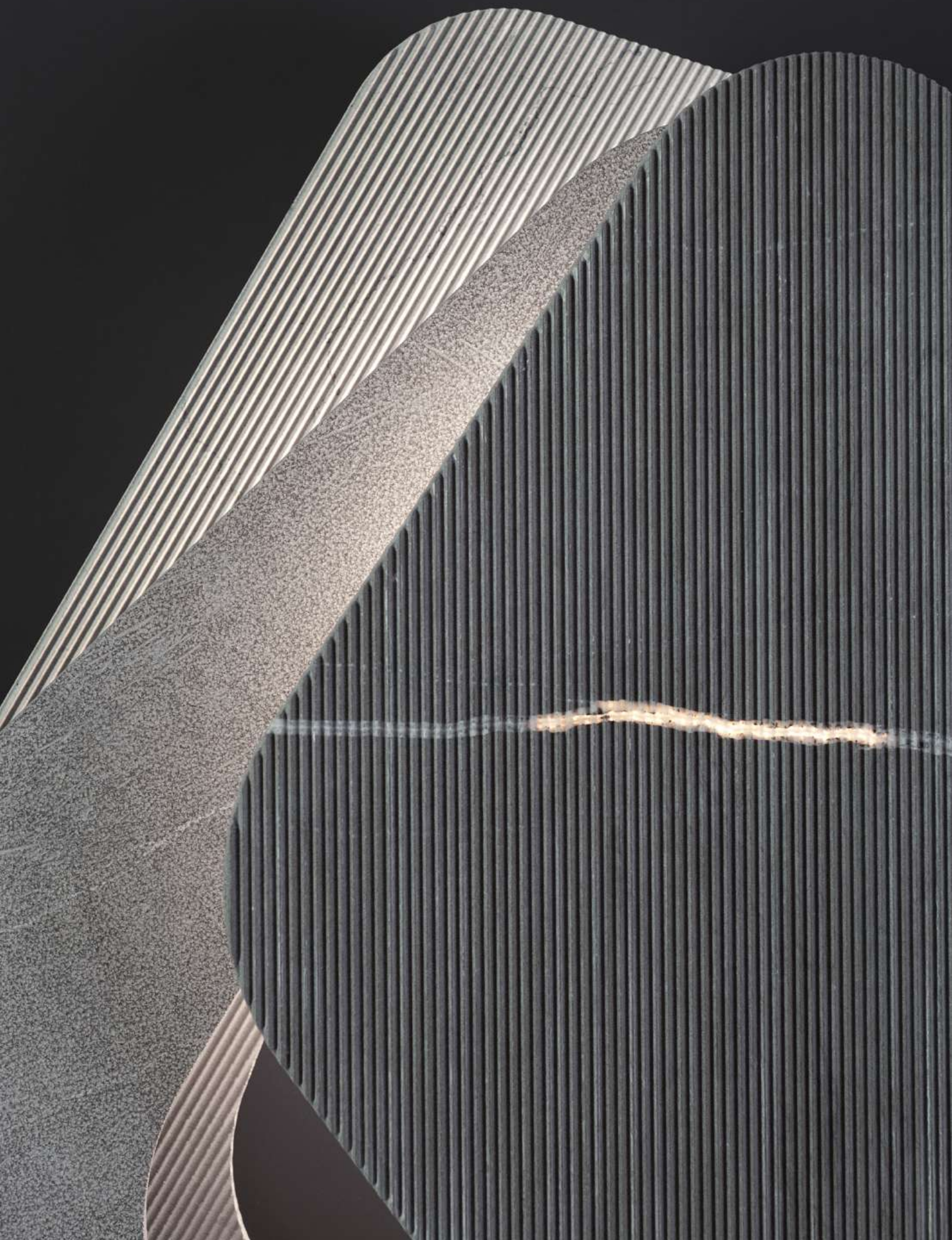
It's an endless pattern, an ever-changing image; it's the freedom of having a thousand different ways to compose it. Loop is a game that never gets tiresome, in which the materials take center stage and highlight its surface.

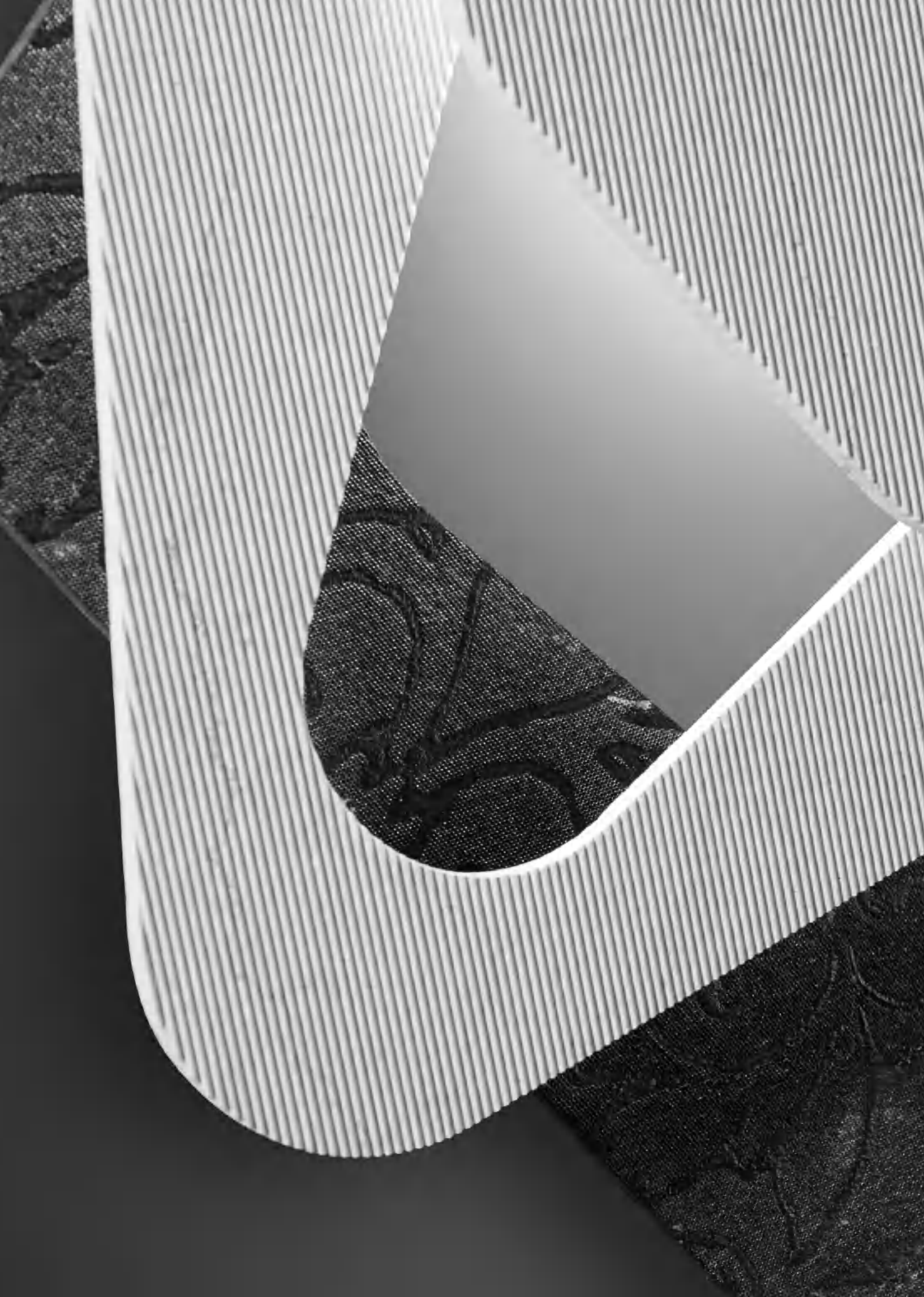


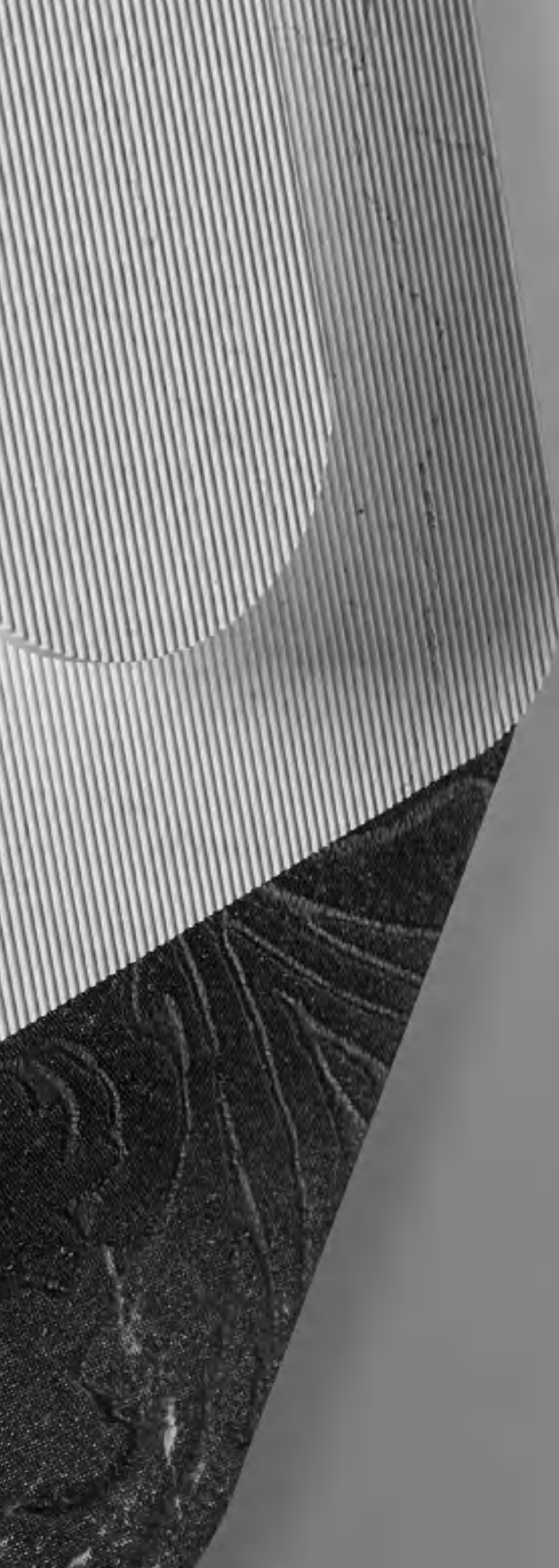












LOOP

Applique

It's an applique lamp that can be constructed from different materials and offers four different finishes: Mercurio, Marte, Grollato and Levigato. Loop is made of three distinct sections that can be freely combined and placed.

45 x 45 x 11,5 cm

60 x 60 x 11,5 cm

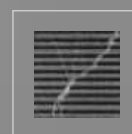
MATERIA



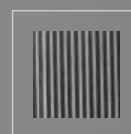
BIANCO CALACATTA



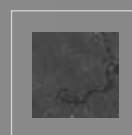
BIANCO CARRARA



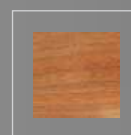
GRIGIO FOUSSANA



GRIGIO THALA



NERO MARQUINA



CHERRY

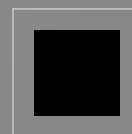


WALNUT



DURMAST

TEXTURE



PIZZO



GOCCE PREZIOSE



TESSUTO

NIGHT&DAY

Horizontal, Vertical. Black,
White. Two faces, two aspects.
Just like a mythological god,
Night & Day has two aspects
facing and confronting each
other. And sometimes they kiss.











NIGHT & DAY

Ceiling light

It's a ceiling light that can be positioned horizontally or vertically, on its own, with another one or in a larger composition. Its hollow inner space can be fitted with a metal mesh, so that light finds new ways out. There are three marble variants - Bianco Carrara, Nero Marquina and Grigio Domos.

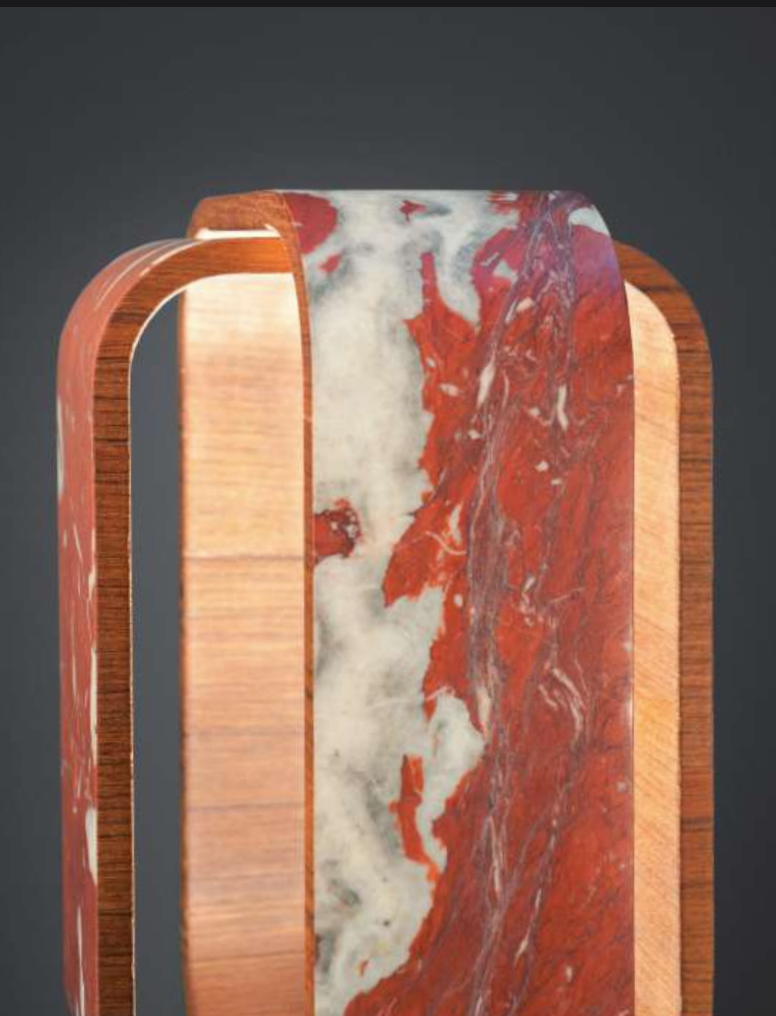
50 x 22,5 x 12 cm

PAOLO&FRANCESCA

Paolo & Francesca originates from a single block of marble, a lover's embrace. A perfect and unbreakable bond that shows their union to the world. A union expressed in materials and color.







PAOLO & FRANCESCA

Table lamp

It's a table lamp offered in three different marble and wood combinations: Breccia Capraia, Rosso Francia and Gris Des Ardennes Doré, Durmast, Cherry and Walnut. Combining these materials enhances light and keeps it inside the lamp.

25 x 22 x H 42 cm

ROMEO&GIULIETTA

Romeo & Giulietta originates from a single block of marble, a lover's embrace. A perfect and unbreakable bond that shows their union to the world. A union expressed in solidity and transparency.















ROMEO & GIULIETTA

Table or ceiling lamp

The lamp is offered in four different sizes and several materials: Onice Bianco, Onice Verde, Onice Dusk, Bianco Calacatta and Breccia Capraia, Brass, silk and polished Steel. Romeo & Giuletta is available in its table and ceiling versions.



18,5 x 16 x 30 cm

18,5 x 16 x 42 cm

18,5 x 16 x 52 cm

18,5 x 16 x 62 cm



18,5 x 16 x 52 cm



A MARBLE LAMP

Project by Domos Design.
Design by Antonio Romanò.

Catalogue by Brandica.
Photo by Filippo Rigon.



Domos s.r.l.
via Domenico da Lugo 19
37023 Lugo di Grezzana, Verona (Italy)

Phone +39 045 880 10 29

Fax +39 045 880 16 44

domos@domosdesign.it

www.domosdesign.it

www.marmobon.it