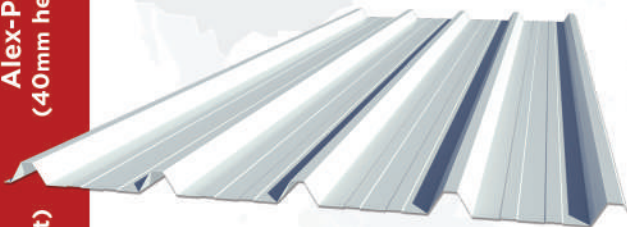


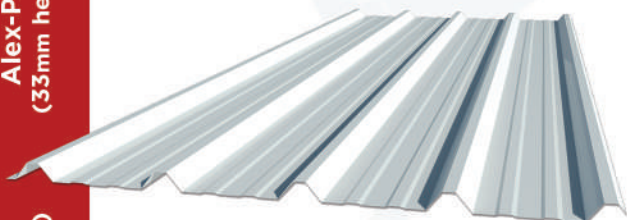


## CORRUGATED & WAVE SINGLE SHEETS:

Alex-P40  
(40mm height)



Alex-P33  
(33mm height)



Alex-P20  
(20mm height)



Alex-W20  
(20mm height)



**Main Office:** Behind 30 - Patrice Lumumba  
St.El-Obour Building - 2nd Floor- Alexandria  
Tel/Fax: (+203)39 25 798 /(+203) 39 25 768  
: (+203)39 28 874 /(+203) 39 25 269

**Cairo Office:** 28 Gamal Salem st. from  
mosaddk El-Dokki,Giza.  
Tel: (+2) 0233355421 / (+2) 0233355429

**Factory:**K21 Behind Merghem Warehouse  
Store, Alexandria,Cairo Desert Road  
Tel/Fax: (+203) 3420159 / (+203) 3420160

Scan me !



WEBSITE

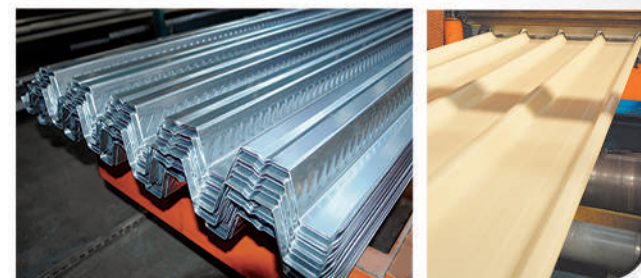
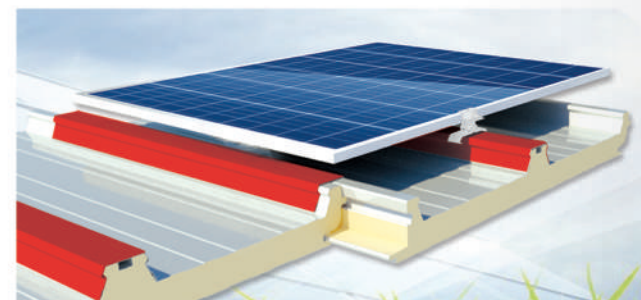
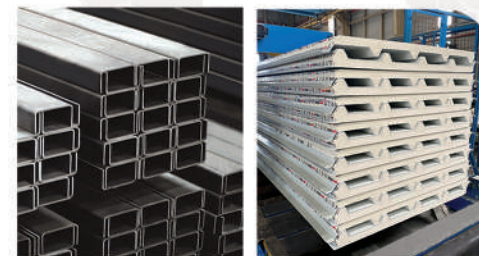


CATALOGUES

**ALEXFORM**  
ALEXANDRIA STEEL FORMING COMPANY



## FROM CONCEPT TO CREATION..



AlexForm

[www.alexform.com](http://www.alexform.com)



# Alex-panel

Alexandria steel forming co.

## SANDWICH PANELS:

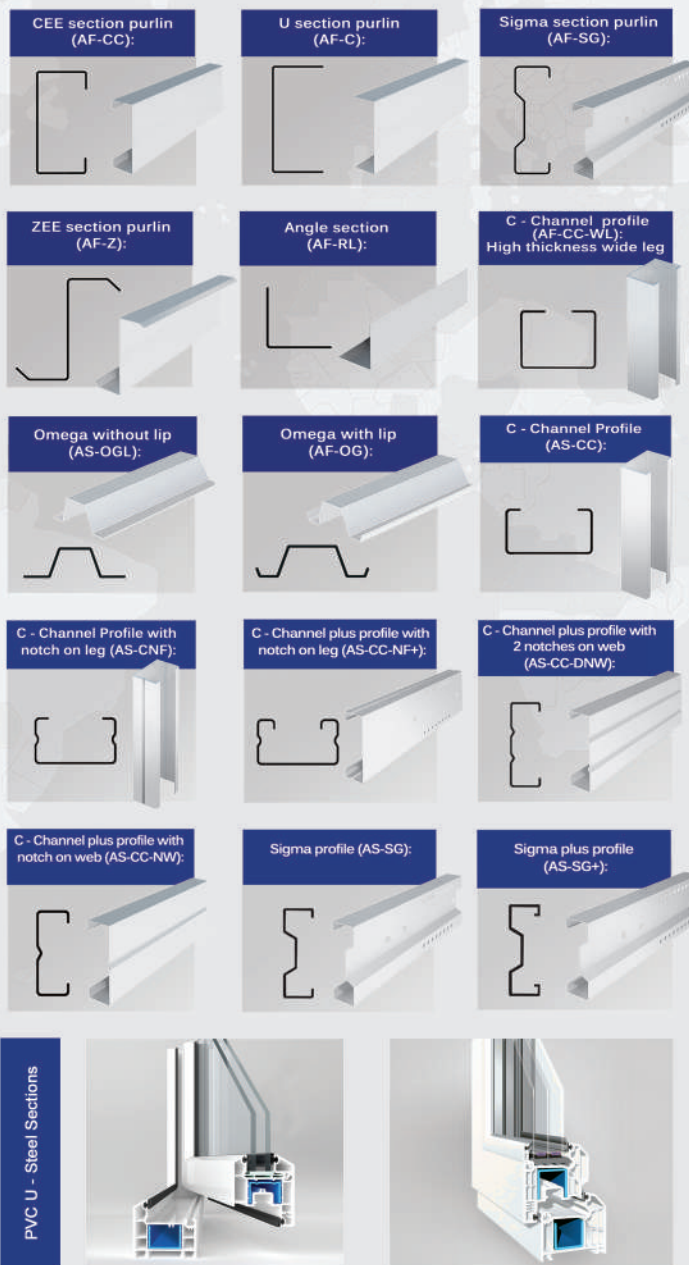
Hidden  
Cold  
Secret Fix  
Eco Roof  
Flexible faced  
Multiply Roof  
panel (5 Ribs)  
panel (3 Ribs)  
panel (3 Ribs)  
panel (5 Ribs)  
panel (5 Ribs)



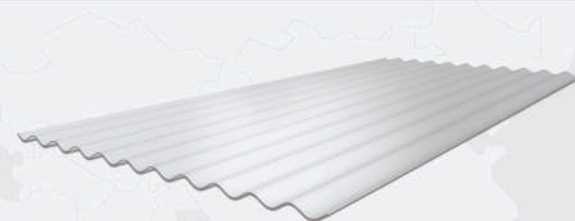
# ALEXFORM

ALEXANDRIA STEEL FORMING COMPANY

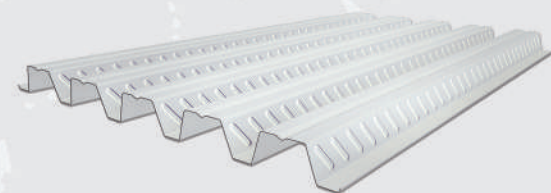
## COLD FORMED STEEL SECTIONS:



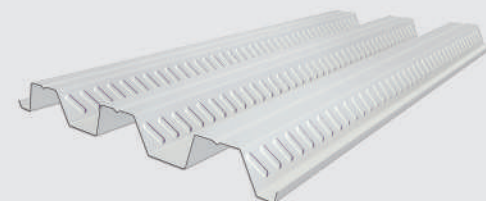
## ALEXFORM STEEL DECK:



Alex-Wave Decking AF-WD20  
Composite Decking (20mm height)



Alex-Decking AF-SD55  
Composite Decking (55mm height)



Alex-Decking AF-SD75  
Composite Decking (75mm height)